

BRIDGING GAPS, BREAKING BOUNDARIES: COLLABORATION IN ORAL HEALTH



SOUTHWEST DENTAL CONFERENCE
HILTON ANATOLE DALLAS • AUGUST 21-22, 2026

BRIDGING MEDICINE + DENTISTRY

UT SOUTHWESTERN PHYSICIANS AT THE SOUTHWEST DENTAL CONFERENCE

The Southwest Dental Conference is proud to welcome medical physicians from UT Southwestern Medical Center to the 2026 program. These interdisciplinary sessions reflect our theme, “Bridging Gaps, Breaking Boundaries: Collaboration in Oral Health,” and highlight the growing importance of collaboration between medicine and dentistry.

As patient needs become more complex, dentists play an increasingly critical role in identifying systemic disease, managing medically complex patients, and working alongside medical colleagues. These UTSW-led sessions provide valuable insight into conditions, therapies, and innovations that directly impact dental practice and patient outcomes.

Featured UTSW Friday Courses:

Survivorship, Screening, and HPV: Improving Outcomes for the Head and Neck Cancer Community

Andrew Day, MD, MPH
Friday, 12:30–2:00 p.m.

Oral Manifestations of Cutaneous Disease

Stephanie Savory, MD
Friday, 2:30–4:00 p.m.

Featured UTSW Saturday Courses:

Transforming Obesity Care: From Weight Loss to Health Gains

Jaime Almandoz, MD, MBA, FTOS
Saturday, 8:00–11:00 a.m.

Chimeric Antigen Receptor (CAR) T-Cell Therapy: History, Present, and Future Directions

Larry Anderson, MD, PhD
Saturday, 12:00–1:30 p.m.

Precision Oncology

Isaac Chan, MD, PhD
Saturday, 2:00–3:30 p.m.





It is my honor and privilege to welcome you to the 2026 Southwest Dental Conference. Every year, this event brings together thousands of dentists, team members, and industry partners from across the country — an inspiring reminder that dentistry is strongest when we learn and grow together. This meeting promises to be as enriching as it is inspiring.

The theme “Bridging Gaps, Breaking Boundaries: Collaboration in Oral Health” reflects our belief that the future of dentistry lies not only in scientific innovation and clinical mastery, but also in our ability to work across specialties, across disciplines, and across communities. Our profession is evolving quickly, and the needs of our patients are more complex than ever. By fostering collaboration — between clinicians, researchers, educators, team members, and industry — we can break through the traditional boundaries of practice and create a stronger, healthier future for those we serve.

The SWDC is a shining example of what organized dentistry makes possible. It is through gatherings like this that we connect, collaborate, and renew our shared commitment to the profession. None of us can meet the challenges of dentistry in isolation. The clinical, business, and technological demands of our practices are best met when we stand together, learn together, and advocate together.

By participating in this Conference, you are making a powerful investment — not only in your own professional growth, but also in the advancement of dentistry as a whole. The insights you gain here, the conversations you have, and the relationships you build extend far beyond these few days. They ripple outward to your practice, your patients, your community, and our profession at large.

The educational lineup for 2026 is exceptional, carefully curated to embody the spirit of collaboration. Whether you are seeking advanced training in a specialty area, looking to enhance team communication, or exploring new technologies, this year’s program has something to offer every member of the dental community.

Beyond clinical excellence — we have built a program that emphasizes working together: dentists with staff, specialists with general practitioners, clinicians with industry experts. This spirit of collaboration is what makes dentistry stronger and our care more impactful.

Dentistry is experiencing a revolution in technology — from 3D printing and AI-supported diagnostics to regenerative therapies and expanded digital workflows. But innovation alone is not enough. For these tools to truly transform patient care, they must be shared, discussed, and integrated across disciplines. Dentistry happens in teams, and the Southwest Dental Conference celebrates this truth by offering robust programming for hygienists, assistants, administrative staff, and laboratory technicians. By attending together, entire practices can return home aligned, energized, and equipped to provide even better care to their patients.

“Bridging Gaps, Breaking Boundaries” is more than a tagline. It is a call to action. Dentistry’s future depends on our willingness to connect across divides, embrace innovation, and prioritize collaboration over competition. Whether we are bridging the gap between specialties, breaking through barriers in access to care, or fostering stronger bonds within our own teams, each of us plays a vital role in shaping the profession.



On behalf of the SWDC planning committee, I thank you for your commitment to dentistry and for joining us this year. It is your participation, your curiosity, and your collaboration that make this Conference extraordinary. Together, let us bridge gaps, break boundaries, and build a stronger future for our patients, our practices, and our profession.

THOMAS SCHLIEVE, DDS, MD
2026 Southwest Dental Conference Chairman

The Southwest Dental Conference is the meeting of choice for quality professional development, offering innovative educational opportunities with our signature atmosphere of tradition, hospitality and camaraderie.

CONTENTS

GENERAL INFORMATION

- Registration 4
- Cancellation Policy..... 5
- Continuing Education ... 6
- Transportation..... 7
- Hotel Information..... 7
- Registration Form .. 10-11
- Sponsors 52

CLINICAL PROGRAMS

- Schedule at a Glance .. 12
- Clinicians..... 16
- Clinicians by Topic..... 22
- Friday Courses 25
- Saturday Courses..... 39

SPECIAL EVENTS

- Networking Break..... 8
- ICD Breakfast 8
- Exhibit Hall 9
- New Dentist Courses .. 50
- Team Courses 51

CONTACT US

Southwest Dental Conference
972-386-5741
info@dcds.org
www.swdentalconf.org

REGISTRATION

**ALL EXHIBIT BOOTHS AND
CLINICAL PROGRAMS ARE LOCATED AT:**

**HILTON ANATOLE DALLAS
2201 NORTH STEMMONS FREEWAY
DALLAS, TEXAS 75207**

PREREGISTER TO SAVE TIME AND MONEY!

Avoid long registration lines: preregister online or by mail using the form on pages 10-11. Registration after July 13, 2026 will incur an additional \$50 fee per person.

ONLINE PRE-REGISTRATION IS EASY!

Select courses then complete registration online (swdentalconf.org). Those who register online will receive an email confirmation within 72 hours.

If mailing is preferred, send form to the registration company:

Southwest Dental Conference
170 Depot St. Unit 1A
Blue Ridge, GA 30513

Registrations are processed in the order received. Students can only register by mail or on-site and family members can only register on-site. All students must provide a copy of their valid student ID card when registering by mail or on-site.

Telephone and fax registrations are not accepted. All forms must be received by the registration company on or before July 13, 2026 to qualify for the preregistration rates. Registrations after this date must be done online and will incur additional charges. Fees are payable to Southwest Dental Conference in U.S. funds by check, money order, MasterCard, Visa or American Express. Credit card users must supply a new credit card number within 24 hours of denial notification or ordered tickets will be returned to inventory. Tickets will not be held.

ON-SITE REGISTRATION HOURS

Thursday, August 20	12:00-5:00 p.m.
Friday, August 21	7:30 a.m.-5:00 p.m.
Saturday, August 22	7:30 a.m.-1:00 p.m.

PREREGISTRATION MATERIALS

Badges and tickets are sent to U.S. registrants by mail. Materials for those outside the U.S. are held for pickup at the On-site Registration Area. Each registered person receives a personalized packet of materials. Obtain an on-site meeting program and other important information at the Welcome Center when you arrive.

CORRECTIONS/CHANGES/ADDITIONS

Corrections, changes and additions are processed at no charge after original registration has been submitted. Online registrants may make certain changes to their information and add classes through the website (swdentalconf.org). You cannot cancel registrations on the website. You may also mail corrections, changes and additions to the registration company. Indicate the ID number shown on your name badge.

TIPS FOR REGISTERING ONLINE:

- 1) If you begin online then close out without making any payment, your progress will not save; so print out the registration brochure and have everyone select classes BEFORE starting your team's online registration.
- 2) Note when registering a dentist's staff that only dentists are ADA Members. There is no reduced pricing for a Member's staff.
- 3) Multiple people can be added to registration, sharing the same credit card. While in the initial person's account, look for the red button that says "Add Attendee" or the pull down menu subheading that says "Add registrant."
- 4) Select your courses early! In previous years, popular courses have sold out as early as mid-June. Class sizes are dictated by fire marshal regulations and larger classrooms are generally not available.
- 5) We stand by our cancellation/refund policy: No refunds are given after the stated deadline of July 24, 2026 regardless of reason including, but not limited to, death, illness or acts of God.

TICKETS & COURSES

ONLINE HANDOUTS

After registering for courses, attendees with valid email addresses will receive access to handouts online.

Attendees should download the handouts for each course they plan to attend. Handouts are not available on-site.

LOST BADGES

Badges are required for entrance into courses and Exhibit Hall. Lost badges are replaced at no additional cost at the On-site Registration desk with ID.

HANDS-ON WORKSHOPS

Workshops marked with an asterisk (*) require supplies. Supply lists are printed with the course synopsis. Attendees are responsible for bringing supplies to the course.

CLASSROOMS

All rooms are set to maximum capacity. When the room is filled, no additional people will be admitted and no standing is allowed per order of the fire marshal. No children are permitted in the classrooms. Cellular phones and pagers must be turned off prior to entering any of the meeting rooms.

SWDC COURSE TICKET POLICY

All 2026 Southwest Dental Conference courses are ticketed. You must be registered and have a ticket to attend each course. Please indicate the course numbers on your registration form.

You must register for the courses you plan to attend in order to receive CE credit. The SWDC CE Verification system does not allow you to enter completion codes for courses in which you did not obtain a ticket.

STAY CONNECTED!

FOLLOW SOUTHWEST DENTAL CONFERENCE ON SOCIAL MEDIA FOR THE LATEST NEWS, INFORMATION, TIPS AND CONTESTS!



CANCELLATION/REFUND POLICY

DEADLINE: JULY 24, 2026

Send an email request for cancellation/refund accompanied by your badge number to info@dcds.org. A 20% administrative fee will be assessed.

No refunds are given after the stated deadline regardless of reason including, but not limited to, death, illness or acts of God.

Refunds are processed within four weeks after completion of the Conference.



COURSE FEES

Early registration is encouraged to ensure course availability and early bird pricing. Course fees increase by \$10 per course after July 13, 2026.

CE REQUIREMENTS

DALLAS COUNTY DENTAL SOCIETY

ADA CERP® | Continuing Education Recognition Program

ADA CERP is a service of the American Dental Association to assist dental professionals in identifying quality providers of continuing dental education. ADA CERP does not approve or endorse individual courses or instructors, nor does it imply acceptance of credit hours by boards of dentistry. Dallas County Dental Society designates one (1) credit per hour for CE activities, unless otherwise noted.

Concerns or complaints about a CE provider may be directed to the provider or to ADA CERP at www.ada.org/goto/cerp.

CE courses provided by Dallas County Dental Society are recognized by the Texas State Board of Dental Examiners, other state's licensing bodies and the Academy of General Dentistry. In Texas, CE courses must be "technical or scientific as relates to clinical care" to qualify for relicensure. Courses are designated "technical and/or scientific" or "nontechnical." CE requirements differ from state to state, so please check with your state for specific requirements. AGD course codes and CE credit hours are shown on each course synopsis.

COURSE DISCLAIMER

The Southwest Dental Conference and its sponsor, Dallas County Dental Society, make every effort to present high-caliber clinicians in their respective areas of expertise. The presentations of the clinicians in no

way imply endorsement of any product, technique or service presented in the courses. The Southwest Dental Conference and Dallas County Dental Society specifically disclaim responsibility for any material presented.

CE DOCUMENTATION

A CE Attendance Worksheet is available on-site at the Welcome Center. Record course information and completion codes on the CE Attendance Worksheet. Completion codes are given at the conclusion of each course. Each attendee is responsible for maintaining all CE documentation. AGD members may contact AGD for their forms. Some states have different requirements for documentation and verification of course credits. Please check with your state.

CE VERIFICATION

CE Verification is available on the SWDC mobile app throughout the Conference and on the Conference website at swdentalconf.org post-Conference. Click on the CE Verification link. You will be directed to enter your badge number and your last name. After entering this information, please enter completion codes for every course you attended. You may either print or email your certificate. This site will be available for six months after the 2026 SWDC.

THE REGISTRATION SERVICE WILL MAIL CE VERIFICATION CERTIFICATES AT NO CHARGE FOR UP TO 90 DAYS AFTER THE CONFERENCE; THEREAFTER, A \$25 CHARGE IS ASSESSED.



HOTEL & TRAVEL

TRAVEL INFORMATION

Dallas is easily accessed from across the country by two airports:

- Dallas Love Field (10 min./6 mi.)
- Dallas/Fort Worth International (20 min./14 mi.)

DART RAIL AND BUS SYSTEM

Market Center Station is the closest light rail station, approximately a 15-20 minute walk. Trains run at 20-minute intervals, 5:30 a.m.-12:30 a.m., seven days a week from stations are located throughout Dallas.

I35 @ Market Center - E - MB is closest bus stop, a 3 min walk.

Wycliff @ I35 - N - MB is a 5 min walk away. These bus lines stop near Hilton Anatole: 405, 63, 749.

A route map can be found by clicking here. For more information, call DART at 214-979-1111 or visit dart.org.

TRINITY RAILWAY EXPRESS

If coming from west of Dallas, the Trinity Railway Express brings riders to Union Station, where you can catch a DART train or bus to get close to the Hilton Anatole. For routes and schedules, visit trinityrailwayexpress.org.

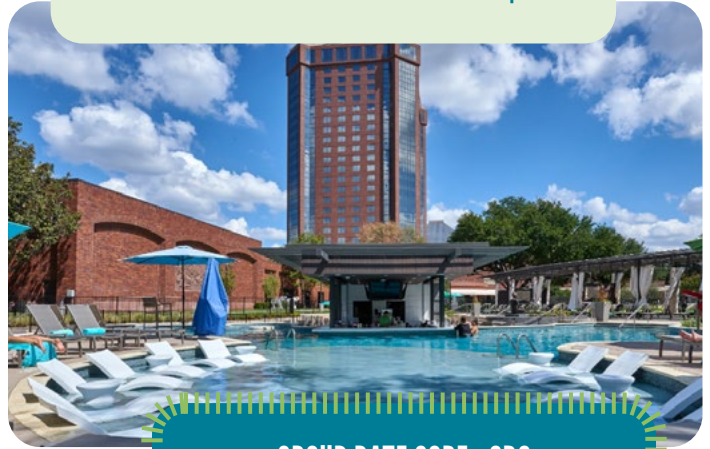
PUBLIC PARKING

Self-parking at the Hilton Anatole for the Conference on Friday and Saturday (daytime only) will have a daily rate of \$15. Overnight parking rates and valet parking daily rates may vary; oversize vehicles extra. For more information, see the Anatole's Parking Policy at <https://www.hilton.com/en/hotels/dfwanhh-hilton-anatole/resort/>.

HOTEL ALERT!

Third-party companies may be claiming to book hotels using the SWDC name on an unauthorized website without our permission. These companies are not in any way affiliated with the SWDC or Hilton Anatole Dallas (headquarters hotel). The SWDC does not use third-party companies for reservations, and SWDC cannot verify the validity or security of any third party solicitor. Please book your hotel by contacting the hotel directly via web or phone. If you have any questions about the authenticity of information referencing our Conference, please contact us at 972-386-5741.

HILTON ANATOLE ROOM RATE: \$234



GROUP RATE CODE: SDS
GROUP RATE DEADLINE: JULY 19, 2026

HILTON ANATOLE DALLAS

2201 North Stemmons Freeway, Dallas, Texas 75207

To Make Hotel Reservations:

Go Online: <https://book.passkey.com/e/51117825>

Or CALL 1-800-955-4281 and provide code SWD

Hilton Anatole's legendary distinction for grand design, devoted hospitality and enduring style is unmatched. Distinctive architecture, exquisite antiques and an astounding collection of priceless art — one of the largest ever assembled for a U.S. hotel — provide a backdrop for the most comprehensive, award-winning conference and exhibit facilities ever assembled under one roof. Recognized with over 125 industry awards for exceptional facilities and service, this hotel will welcome you with an array of highlights including four restaurants, five bars, an 80,000-sq-ft fitness club and spa, a private, seven-acre park, a leisure pool, activity pools, lazy river and water slides.

Please note: Our dates are determined by the number of attendees that stay in the SWDC hotel room block. Please help us get the best, most consistent dates possible by staying in the Hilton Anatole Dallas. This ensures that we receive credit for your stay and improves our standing with the hotel.

**REGISTER EARLY TO BOOK YOUR
HOTEL RESERVATION!**

SPECIAL EVENTS

SMILES & SNACKS:

FRIDAY • 11:30AM - 1:00PM • EXHIBIT HALL

A DENTAL NETWORKING BREAK

JOIN US FOR A FUN NETWORKING SOCIAL!
ENJOY LIGHT HORS D'OEUVRES AS YOU MINGLE WITH COLLEAGUES AND
DISCUSS NEW SERVICES AND TECHNOLOGY WITH EXHIBITORS.
BADGE IS REQUIRED FOR ENTRY.



**INTERNATIONAL
COLLEGE OF DENTISTS
2026 MEMBERS BREAKFAST
SATURDAY, AUGUST 22
7:00-9:00 A.M.
HILTON ANATOLE DALLAS**

The International College of Dentists invites all ICD members for breakfast during the 2026 Southwest Dental Conference.

To register, enter Course Code S01 during your 2026 SWDC registration process. No CE credit is given for this event.

\$50.00 per ICD Member

.....

If you are not registering for the conference, but would like to attend our annual breakfast meeting, please make your check out to ICD-TX and mail to the ICD-TX Section Secretary/Treasurer:

Donna Miller, DDS
Creekwood Dental Arts
7911 Woodway Dr.
Waco, TX. 76712

EXHIBIT HALL

STEP INTO THE HEART OF INNOVATION WHEN YOU VISIT THE SWDC EXHIBIT HALL!

Connect with experts across 200 interactive booths, test-drive cutting-edge technology, and uncover solutions that streamline your workflow, elevate patient care and boost profitability. Experience hands-on demos, expert insights, and exclusive show-only deals — all in one place. This is where new ideas are sparked, partnerships are created, and your next breakthrough could be one conversation away.

Every visit not only fuels your success, but also shows support and appreciation for the partners who make the Southwest Dental Conference possible.



**DON'T MISS GREAT DEALS ON ALL YOUR OFFICE
NEEDS! CLICK HERE FOR A LIST OF ALL CURRENT
SWDC EXHIBITING COMPANIES!**



EXHIBIT HALL HOURS
FRIDAY 9:00 A.M. - 6:00 P.M.
SATURDAY 9:00 A.M. - 1:30 P.M.

**THE SOUTHWEST DENTAL CONFERENCE WOULD LIKE TO THANK
ALL EXHIBITING COMPANIES FOR THEIR CONTINUED SUPPORT.**



2026 SOUTHWEST DENTAL CONFERENCE REGISTRATION FORM

Registration Instructions: Register online at swdentalconf.org OR mail this registration form. Forms must be received at the registration company on or before the preregistration deadline of July 13, 2026. Mail to: SOUTHWEST DENTAL CONFERENCE; 170 DEPOT STREET, UNIT 1A, BLUE RIDGE, GA 30513. Faxed or emailed registrations are not accepted. Registration fees increase an additional \$50 on July 14, 2026. Refer to the cancellation policy on page 5. Only one form is necessary for each office, and you may photocopy it to accommodate additional registrants. Please complete both pages of this form.

1 Primary Registrant

Please print.

Name _____
Mailing Address _____
City _____ State _____ Zip Code _____
Business Phone _____
Email Address _____

Please check if you would like to receive important SWDC email alerts. We will never share or sell your email address and you may unsubscribe anytime. If not checked, you will not receive information or updates about SWDC.

ADA# (for dentists and dental students only) _____

Please indicate if you or your guest(s) have a disability that requires accommodations to fully participate in the Southwest Dental Conference.



Hotel Accommodations

Please use the group code on page 7 to make hotel reservations.

Hilton Anatole Dallas Other _____

2 Payment Method

Check or Money Order payable to SOUTHWEST DENTAL CONFERENCE.

Check Enclosed # _____ VISA MasterCard American Express

Credit Card# _____ Expiration Date: _____

Signature _____ Printed Name _____

(authorize DCDS to charge your card.)

3 Registration Categories and Fees

Fees increase an additional \$50 after July 13, 2026.

Registration Category	Early Bird	After 7/13/26
(A) Dallas County Dental Society Member	FREE	\$60
(B) ADA Member	\$150	\$200
(C) ADA Life Member	FREE	FREE
(D) Non-ADA Member	\$640	\$690
(E) Registered Dentist's Spouse	FREE	FREE
(F) Family Member (Under 18) MUST REGISTER ON-SITE	FREE	FREE
(G) Spouse (Other Than Registered Dentist)	\$55	\$105
(H) Hygienist	\$95	\$145
(J) Chairside Assistant	\$75	\$125
(K) Business Assistant	\$75	\$125
(L) Dental Technician	\$75	\$125

STUDENTS MUST REGISTER BY MAIL OR ON-SITE AND MUST PROVIDE A COPY OF STUDENT I.D. WHEN REGISTERING.

- (P) Graduate Student Dentist \$60 (S) Student Assistant \$25
- (Q) Student Dentist \$25 (T) Student's Spouse \$25
- (R) Student Hygienist \$25

EXHIBIT HALL PASS - DENTISTS ONLY (ADA # Required)

- (U) Exhibit Hall Pass (Saturday Only) \$75

Practice Specialty (For Dentists Only)

- 1. General Practice
- 2. Dental Anesthesiology
- 3. Dental Public Health
- 4. Endodontics
- 5. Oral and Maxillofacial Pathology
- 6. Oral and Maxillofacial Radiology
- 7. Oral and Maxillofacial Surgery
- 8. Oral Medicine
- 9. Orofacial Pain
- 10. Orthodontics and Dentofacial Orthopedics
- 11. Pediatric Dentistry
- 12. Periodontics
- 13. Prosthodontics

CW: _____ TOTAL FEES: _____

2026 SOUTHWEST DENTAL CONFERENCE REGISTRATION FORM, CONTINUED

Name(s) for Badge(s)

4 Registration

5 Courses/Special Events

6 Total Fees

Last Name _____ First Name _____ Category _____ Fee \$ _____
 Practice Specialty (Dentists Only, Code #) _____ ADA # _____
 Email address: _____

Course#	Fee	Course#	Fee
_____	_____	_____	_____
_____	_____	_____	_____
_____	_____	_____	_____

\$ _____ Fees \$ _____

Last Name _____ First Name _____ Category _____ Fee \$ _____
 Practice Specialty (Dentists Only, Code #) _____ ADA # _____
 Email address: _____

Course#	Fee	Course#	Fee
_____	_____	_____	_____
_____	_____	_____	_____
_____	_____	_____	_____

\$ _____ Fees \$ _____

Last Name _____ First Name _____ Category _____ Fee \$ _____
 Practice Specialty (Dentists Only, Code #) _____ ADA # _____
 Email address: _____

Course#	Fee	Course#	Fee
_____	_____	_____	_____
_____	_____	_____	_____
_____	_____	_____	_____

\$ _____ Fees \$ _____

Last Name _____ First Name _____ Category _____ Fee \$ _____
 Practice Specialty (Dentists Only, Code #) _____ ADA # _____
 Email address: _____

Course#	Fee	Course#	Fee
_____	_____	_____	_____
_____	_____	_____	_____
_____	_____	_____	_____

\$ _____ Fees \$ _____

REMINDERS

- Courses marked with an asterisk (*) require supplies, as indicated on course descriptions. Attendees are responsible for bringing supplies.
- Save time and register online at swdentalconf.org.
- Those registering as spouses or exhibitors cannot receive CE credit.
- All 2026 SWDC courses are ticketed. Please indicate the course number for each course you intend to take.
- Fees increase \$50 after 7/13/2026.



YES! I want to make a \$50.00 or more tax-deductible contribution to the Dallas County Dental Society Foundation, benefiting access to oral health care in our community.

- \$50.00
 \$100.00
 Other \$ _____

7 GRAND TOTAL \$ _____

FRIDAY, AUGUST 21

CRS #	TITLE	CLINICIAN	TIME	EARLY BIRD	AFTER JULY 14
SPECIAL EVENTS					
F01	CE Express: See page 27 for a list of clinicians and topics		8:00 a.m.-12:00 p.m.	\$85	\$95
	Smiles & Snacks: A Dental Networking Break in the Exhibit Hall		11:30 a.m.-1:00 p.m.	FREE	FREE
F02	Hygiene CE Express: See page 33 for a list of clinicians and topics.		12:30-4:30 p.m.	\$85	\$95
WORKSHOPS					
F03	Oral Surgery for the General Practitioner Workshop	Edwab	8:00-11:00 a.m.	\$385	\$395
F04	Equipment Maintenance and Repair Workshop	Midwest Dental	9:00-11:00 a.m.	\$75	\$85
F05	Take a Bite Out of the Sleep Apnea Problem in Your Practice Workshop	Elliott	12:30-3:30 p.m.	\$235	\$245
F06	Equipment Maintenance and Repair Workshop (repeat)	Midwest Dental	1:00-3:00 p.m.	\$75	\$85
F07	Oral Surgery for the General Practitioner Workshop (repeat)	Edwab	1:00-4:00 p.m.	\$385	\$395
F08	Anatomically Centered Endodontics Workshop	Safi	1:00-4:00 p.m.	\$235	\$245
F09	Oral Regeneration Can Be a Sticky Situation and L-PRF Can Help! Workshop	Geisinger	1:30-4:30 p.m.	\$260	\$270
F10	The Art and Science of Provisional Restorations Workshop	McDonald	1:30-4:30 p.m.	\$235	\$245
MORNING LECTURES					
F11	Bambi vs Godzilla	Christopher	8:00-11:00 a.m.	\$55	\$65
F12	Sleep Apnea: Time to Wake Up! Introduction to Screening Patients in Your Practice	Elliott	8:00-11:00 a.m.	\$55	\$65
F13	Materials and Techniques to Improve Your Conservative, Adhesive Dentistry	Lawson	8:00-11:00 a.m.	\$55	\$65
F14	Autoimmune and Inflammatory Conditions of the Oral Cavity	P. Patel	8:00-11:00 a.m.	\$55	\$65
F15	Anatomically Centered Endodontics	Safi	8:00-11:00 a.m.	\$55	\$65
F16	Dimensions of Wellness: The Fusion of Physical, Emotional and Social Wellbeing	Zerner	8:00-11:00 a.m.	\$55	\$65
F17	State of the Art and Science in Dental Implants with Focus on Prevention, Diagnosis and Treatment of Complications	Aghaloo	8:30-11:30 a.m.	\$55	\$65
F18	Current Dental Insurance Landscape: Think Like the Insurers to Maximize Success	Dougan	8:30-11:30 a.m.	\$55	\$65
F19	Oral Regeneration Can Be a Sticky Situation and L-PRF Can Help!	Geisinger	8:30-11:30 a.m.	\$55	\$65
F20	The Art and Science of Provisional Restorations	McDonald	8:30-11:30 a.m.	\$55	\$65
F21	My Jaw Hurts! What Do I Do? An Overview of Temporomandibular Disorders, Diagnosis and Management	S. Patel	8:30-11:30 a.m.	\$55	\$65
F22	The Mental Dental Connection: The Secret to Being a Better Clinician and Leader	Austin	9:00 a.m.-12:00 p.m.	\$55	\$65
F23	From Exposure Reports to Eyewash Stations: Ensuring OSHA Compliance in Your Practice	Gregory	9:00 a.m.-12:00 p.m.	\$55	\$65

FRIDAY, AUGUST 21

CRS #	TITLE	CLINICIAN	TIME	EARLY BIRD	AFTER JULY 14
<i>AFTERNOON LECTURES</i>					
F24	Survivorship, Screening and HPV: Improving Outcomes for the Head and Neck Cancer Community	Day	12:30-2:00 p.m.	\$30	\$40
F25	Why Are Women So Strange and Men So Weird?	Christopher	1:00-4:00 p.m.	\$55	\$65
F26	Age, Bites, Court and Decomp: The ABC's of Forensic Dentistry	Collier	1:00-4:00 p.m.	\$55	\$65
F27	Open Wide for Opportunity - The Drill on Generative AI in Business	Kamp	1:00-4:00 p.m.	\$55	\$65
F28	Materials and Techniques to Improve Posterior Composites	Lawson	1:00-4:00 p.m.	\$55	\$65
F29	Challenging Cases in Oral Pathology	P. Patel	1:00-4:00 p.m.	\$55	\$65
F30	Avoiding Disasters: Emergency Management in the Dental Office	Read-Fuller	1:00-4:00 p.m.	\$55	\$65
F31	The Thoughtful 30: 30 Day Wellness Reset	Zerner	1:00-4:00 p.m.	\$55	\$65
F32	Updates in Alveolar Ridge Augmentation vs Graftless Solutions for Full Arch Rehabilitation	Aghaloo	1:30-4:30 p.m.	\$55	\$65
F33	Secrets of Smoother Claims Processing: Top Ten Reasons Claims are Denied	Dougan	1:30-4:30 p.m.	\$55	\$65
F34	Top 10 Pharmacotherapeutics for Orofacial Pain Disorders	S. Patel	1:30-4:30 p.m.	\$55	\$65
F35	The True Value of Digital Dentistry: A Four Step Revolution for Your Practice	Austin	2:00-5:00 p.m.	\$55	\$65
F36	What You Can't See Could Hurt You: Unseen Risks in Dental Care	Gregory	2:00-5:00 p.m.	\$55	\$65
F37	Oral Manifestations of Cutaneous Disease	Savory	2:30-4:00 p.m.	\$30	\$40

SMILES & SNACKS:

FRIDAY • 11:30AM - 1:00PM • EXHIBIT HALL

A DENTAL NETWORKING BREAK

**JOIN US FOR A FUN NETWORKING SOCIAL!
ENJOY LIGHT HORS D'OEUVRES AS YOU MINGLE WITH COLLEAGUES AND
DISCUSS NEW SERVICES AND TECHNOLOGY WITH EXHIBITORS.
BADGE IS REQUIRED FOR ENTRY.**



SATURDAY, AUGUST 22

CRS #	TITLE	CLINICIAN	TIME	EARLY BIRD	AFTER JULY 14
SPECIAL EVENTS					
SD1	ICD BREAKFAST		7:00-9:00 a.m.	\$50	\$60
SD2	Hygiene CE Express: See page 44 for a list of clinicians and topics		8:00 a.m.-12:00 p.m.	\$85	\$95
WORKSHOPS					
SD3	Veneer Prep "BLUEPRINT": From Prep to Provisionals Workshop	Bruce	1:00-4:00 p.m.	\$260	\$270
SD4	Difficult Denture Patients: Real-World Solutions Workshop	Folse	1:00-4:00 p.m.	\$260	\$270
SD5	Hall Technique and Atraumatic Glass Ionomer Strip Crowns Workshop	MacLean	1:00-4:00 p.m.	\$260	\$270
SD6	Mastering Digital Impressions: A Simple Guide to Scanning Teeth and Implants Workshop	Ng	1:00-4:00 p.m.	\$235	\$245
SD7	Extraction to Regeneration: Multimodal Approaches for Alveolar Ridge and Soft Tissue Reconstruction Workshop	Sanovich/ Young	1:00-4:00 p.m.	\$385	\$395
SD8	Photography Tips for the Clinician Workshop	Polido	1:30-4:30 p.m.	\$205	\$215
MORNING LECTURES					
SD9	Orthodontic Set-Up for Surgical Cases	Simon	8:00 -9:30 a.m.	\$30	\$40
SD10	Transforming Obesity Care: From Weight Loss to Health Gains	Almandoz	8:00-11:00 a.m.	\$55	\$65
SD11	Treatment Planning "SIMPLIFIED": Three Easy Steps to Success	Bruce	8:00-11:00 a.m.	\$55	\$65
SD12	Collaboration with Medicine: What It Looks Like in a Busy Practice	Donley	8:00-11:00 a.m.	\$55	\$65
SD13	Difficult Denture Patients: Real-World Solutions	Folse	8:00-11:00 a.m.	\$55	\$65
SD14	What's New in Molar Incisor Hypomineralization Management	MacLean	8:00-11:00 a.m.	\$55	\$65
SD15	Beyond the Mold: 3D Printing and Digital Impressions for Today's Dentist	Ng	8:00-11:00 a.m.	\$55	\$65
SD16	From Extraction to Regeneration: Multimodal Approaches for Alveolar Ridge and Soft Tissue Reconstruction	Sanovich/ Young	8:00-11:00 a.m.	\$55	\$65
SD17	Prescribing Controlled Substances: Drugs, Monitoring and Standards of Care	Plemons	8:00 a.m.-12:00 p.m.	\$75	\$85
SD18	The Balance of Occlusion and Esthetics	Fling	8:30-11:30 a.m.	\$55	\$65
SD19	Managing Prosthetic Implant Complications	Jackson	8:30-11:30 a.m.	\$55	\$65
SD20	Extraction, Implant and Graft, When To Do What?	Polido	8:30-11:30 a.m.	\$55	\$65
SD21	Minimally Invasive Orthognathic and When to Combine TMJ Surgery	Arango	10:00-11:30 a.m.	\$30	\$40

SATURDAY, AUGUST 22

CRS #	TITLE	CLINICIAN	TIME	EARLY BIRD	AFTER JULY 14
AFTERNOON LECTURES					
S22	Chimeric Antigen Receptor (CAR) T-Cell Therapy: History, Present and Future Directions	Anderson	12:00-1:30 p.m.	\$30	\$40
S23	A Simplified Approach to Orthognathic Treatment Planning and Caring for the Cleft Patient	Wong	12:30-2:00 p.m.	\$30	\$40
S24	Reducing Periodontal Inflammation Through Nutrition: Macro-nutritional Recommendations That Can Make a Difference	Donley	1:00-4:00 p.m.	\$55	\$65
S25	Treating Severe Dental Wear	Fling	1:30-4:30 p.m.	\$55	\$65
S26	Precision Oncology	Chan	2:00-3:30 p.m.	\$30	\$40
S27	Cut to the Chase: Spotting and Setting Up Surgical Cases	Velicu	2:30-4:00 p.m.	\$30	\$40



**INTERNATIONAL
COLLEGE OF DENTISTS
2026 MEMBERS BREAKFAST
SATURDAY, AUGUST 22
7:00-9:00 A.M.
HILTON ANATOLE DALLAS**

The International College of Dentists invites all ICD members for breakfast during the 2026 Southwest Dental Conference.

To register, enter Course Code S01 during your 2026 SWDC registration process. No CE credit is given for this event.

\$50.00 per ICD Member
.....

If you are not registering for the conference, but would like to attend our annual breakfast meeting, please make your check out to ICD-TX and mail to the ICD-TX Section Secretary/Treasurer:

Donna Miller, DDS
Creekwood Dental Arts
7911 Woodway Dr.
Waco, TX. 76712

CLINICIANS



TARA AGHALOO, DDS, MD, PHD

Sherman Oaks, CA
Professor, Oral and Maxillofacial Surgery, UCLA
Conflict of Interest: BioHorizons, Geistlich, Dentsply-Sirona

See Page 26



JOSHUA AUSTIN, DDS

San Antonio, TX
Private Practice
Conflict of Interest: Align, Solventum, Ivoclar, Voco, Pearl AI, Weave

See Page 26, 27



JAIME ALMANDOZ, MD, MBA, FTOS

Dallas, TX
Professor of Medicine, UTSW
Department of Internal Medicine, Division of Endocrinology
Conflict of Interest: AbbVie, Amgen, Boehringer Ingelheim, Eli Lilly, Haleon, Kailera, Metsera/Pfizer, Nestle, Novo Nordisk, Rivus, Rhythm

See Page 40



WILLIAM "BO" BRUCE, DMD

Simpsonville, SC
Private Practice
Conflict of Interest: None Reported

See Page 41



LARRY ANDERSON, MD, PHD

Dallas, TX
Professor of Internal Medicine, UTSW Medical Center
Conflict of Interest: BMS, GSK, AbbVie, Beigene, Arcellx, Prothena, Janssen, Celgene, Amgen, Karyopharm, Pfizer, Collectar, Sanofi

See Page 40



ISAAC CHAN, MD, PHD

Dallas, TX
Assistant Professor Internal Medicine, UT Southwestern Medical Center
Conflict of Interest: None Reported

See Page 41



ANDREW ARANGO, DDS, MD

Dallas, TX
Private Practice
Chief of OMS, Methodist Dallas Hospital
Conflict of Interest: None Reported

See Page 40



BRUCE CHRISTOPHER, MA, MA, LP, CSP

Eden Prairie, MN
Private Psychology Practice
Conflict of Interest: None Reported

See Page 28

CLINICIANS, CONTINUED



SHANETHA COLLIER, DDS, MS, D-ABFO

Oklahoma City, OK
Private Practice
Diplomate of American Board of Forensic
Odontology
Conflict of Interest: None Reported

See Page 28



ROBERT EDWAB, DDS, MBA

Morganville, NJ
Conflict of Interest: None Reported

See Page 30



ANDREW DAY, MD, MPH

Dallas, TX
Assistant Professor of Otolaryngology-
Head and Neck Surgery,
UT Southwestern Medical Center
Conflict of Interest: None Reported

See Page 29



ERIN ELLIOTT, DDS

Post Falls, ID
Private Practice
Conflict of Interest: None Reported

See Page 30



TIMOTHY DONLEY, DDS, MSD

Bowling Green, KY
Private Practice
Conflict of Interest: None Reported

See Page 42



MICHAEL FLING, DDS

Edmond, OK
Private Practice
Conflict of Interest: None Reported

See Page 42, 43



GARY DOUGAN, DDS, MPH

Cathedral City, CA
Freelance Dental Consultant
Conflict of Interest: None Reported

See Page 29



GREG FOLSE, DDS

Sunset, LA
Private Practice
Conflict of Interest: None Reported

See Page 43

CLINICIANS, CONTINUED



MIA GEISINGER, DDS, MS

Birmingham, AL
Private Practice
Professor and Acting Chair, University of Alabama - Birmingham
Conflict of Interest: BioHorizons, Previous support of research through University; Honoraria for speaking

See Page 31



NATHANIEL LAWSON, DMD, PHD

Birmingham, AL
Associate Professor, University of Alabama Birmingham
Conflict of Interest: 3M, Kuraray, Dentsply, Ivoclar, DMG, GC, Pulpdent, Bisco, Clinicians Choice, Glidewell Premier

See Page 33, 34



KAREN GREGORY, RN, DCIPC

Wake Forest, NC
Owner, Karen Gregory Consulting LLC
Conflict of Interest: ProEdge Dental Water Labs, W&H

See Page 32



JEANETTE MACLEAN, DDS

Phoenix, AZ
Private Practice
Conflict of Interest: Elevate Oral Care, GC America, NuSmile; Honorarium

See Page 45



GABRIELLE JACKSON, DDS, MS

Dallas, TX
Private Practice
Conflict of Interest: None Reported

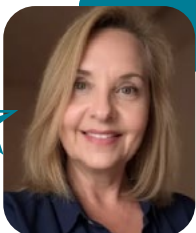
See Page 44



EDWIN "MAC" MCDONALD, III, DDS

Plano, TX
Private Practice
The Pankey Institute Visiting Faculty
Conflict of Interest: Brasseler, Kettenbach

See Page 34



KELLYE KAMP

Dallas, TX
Conflict of Interest: SourceKamp - AI for All

See Page 32



JONATHAN NG, DDS, MSC

Vancouver, BC, Canada
Private Practice
Assistant Clinical Professor University of British Columbia + University of Alberta
Conflict of Interest: None Reported

See Page 45, 46

CLINICIANS, CONTINUED



PARAS PATEL, DDS

Dallas, TX
Private Practice
Co-founder and Chief Medical/Dental Officer: Center for Oral Pathology
Conflict of Interest: None Reported

See Page 35



ANDREW READ-FULLER, DDS, MD

Dallas, TX
Clinical Associate Professor and Residency Program Director of Oral and Maxillofacial Surgery, Texas A&M College of Dentistry
Conflict of Interest: None Reported

See Page 36



SEENA PATEL, DMD, MPH

Phoenix, AZ
Private Practice
Associate Professor, Director of Oral Medicine: Arizona School of Dentistry & Oral Health, A.T. Still University
Conflict of Interest: None Reported

See Page 35, 36



CHAFIC SAFI, DMD, MS

Montreal, QC
Private Practice
Adjunct Professor, University of Pennsylvania and University of Montreal
Conflict of Interest: None Reported

See Page 36, 37



JACQUELINE PLEMONS, DDS, MS

Dallas, TX
Clinical Professor, Department of Periodontics and Director of Stomatology, Texas A&M College of Dentistry
Conflict of Interest: None Reported

See Page 46



RANDY SANOVICH, DDS

Dallas, TX
Private Practice
Conflict of Interest: None Reported

See Page 47, 48



WALDEMAR POLIDO, DDS, MS, PHD

Carmel, IN
Clinical Professor, Indiana University Oral and Maxillofacial Surgery
Conflict of Interest: None Reported

See Page 47



STEPHANIE SAVORY, MD

Dallas, TX
Associate Professor, Dermatology, UTSW Medical Center
Director of the Pigmented Lesions and Melanoma Clinic, UTSW Medical Center
Conflict of Interest: None Reported

See Page 37

CLINICIANS, CONTINUED



PATRICIA SIMON, DDS

Dallas, TX
Private Practice
Fellowship in Craniofacial and Dentofacial Abnormalities at UTSW Medical Center
Conflict of Interest: None Reported

See Page 48



SHAUN YOUNG, DMD

Tampa, FL
Private Practice
Conflict of Interest: Geistlich North America

See Page 47, 48



DIANA-BEATRIX VELICU, DDS, MSC, MS

Dallas, TX
Private Practice
Conflict of Interest: None Reported

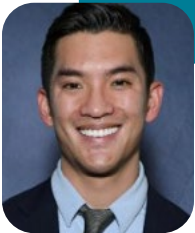
See Page 48



MERIDAN ZERNER, MS, RDN, CSSD, LD, CHWC

Dallas, TX
Conflict of Interest: Cooper Clinic;
AZZ Integrative Nutrition

See Page 38



PATRICK WONG, DDS, MD

Dallas, TX
Assistant Professor, UTSW Medical Center
Division Director, Pediatric Oral and Maxillofacial Surgery, Children's Health
Conflict of Interest: None Reported

See Page 49

WHY BE AN EARLY BIRD?



Better Course Selection

Courses are limited to classroom size—once full, you're out of luck. Popular courses, like CE Express and Hygiene CE Express, sell out quickly every year.

Discounted Registration Fees

Registration fees increase \$50 per person after July 13.

Discounted Course Fees

Course fees increase \$10 per course after July 13.

If you have an office of five attending the conference, with each person booked in four courses, you'll save up to \$450 (\$90 per person) by pre-registering!

CLINICIANS BY TOPIC

ARTIFICIAL INTELLIGENCE

Kamp 32

ANESTHESIA AND PAIN CONTROL

Mukherji 33

S. Patel 35, 36

Plemons 46

ASSISTANTS

McDonald 34

BASIC SCIENCE

Ballard 44

Cotter 33

Lawson 33, 34

Ng 45, 46

Reed 33

DENTAL MATERIALS

Lawson 33, 34

DIGITAL DENTAL PHOTOGRAPHY

Polido 46, 47

DIGITAL IMAGING/RADIOLOGY

Ng 45, 46

ENDODONTICS

Safi 36, 37

Witherspoon 27

ESTHETICS/COSMETIC DENTISTRY

Austin 26, 27

EQUIPMENT MAINTENANCE

Midwest Dental 31

FORENSIC DENTISTRY

Collier 28

HEALTH AND NUTRITION

Almandoz 40

Anderson 40

Austin 26

Chan 41

Day 29

Donley 42

Rodriguez 33

Savory 37

Zerner 38

IMPLANTS

Aghaloo 26

Bergamini 27

Jackson 44

Ng 46

Polido 47

Sanovich 47, 48

Tipton 44

Young 47, 48

INFECTION CONTROL

Gregory 32

INSURANCE MANAGEMENT/CODING

Dougan 29

MEDICAL EMERGENCY TRAINING

Read-Fuller 36

MYOFACIAL PAIN/OCCCLUSION

Fling 42, 43

S. Patel 35, 36

OPERATIVE (RESTORATIVE) DENTISTRY

Bruce 41

Fling 42, 43

Folse 43

Lawson 33, 34

McDonald 34

Ng 45, 46

Perry 44

OROFACIAL PAIN

S. Patel 35, 36

ORAL AND MAXILLOFACIAL SURGERY

Aghaloo 26

Arango 40

Edwab 30

Polido 47

Simon 48

Velicu 48

Wong 49

ORAL MEDICINE/DIAGNOSIS/PATHOLOGY

Day 29

Elliott 30

P. Patel 35

Savory 37

ORTHODONTICS

Arango 40

Simon 48

Velicu 48

Wong 49



DON'T BE SURPRISED IF YOU LOVE THE SWDC APP!

- See your personalized daily schedule with courses and room numbers.
- Find Exhibitors, add them to your itinerary and view their show specials.
- Get local information, including transportation and Dallas attractions.
- Look up Conference information, maps, clinicians and courses.
- Download your handouts.
- Receive alerts during the Conference.
- Redeem CE credits and have the certificate emailed to you.

THE SWDC APP IS AVAILABLE A MONTH PRIOR TO THE CONFERENCE ON IPHONE OR ANDROID.

PLEASE DELETE ANY PREVIOUS VERSIONS.

PEDIATRIC DENTISTRY

MacLean 45

PERIODONTICS

Aghaloo 26
 Allen 27
 Boyd 44
 Donley 42
 Geisinger 31
 Hegde 27

PRACTICE MANAGEMENT/HR

Christopher..... 28
 Dougan 29
 Kamp 32

PRESCRIPTION MEDICATION

Plemons..... 46

FIXED PROSTHODONTICS

Austin 26, 27
 Bergamini 27
 Jackson 44

REMOVABLE PROSTHODONTICS

Bergamini 27
 Folse 43
 Jackson 44

SELF-IMPROVEMENT

Almendoz..... 40
 Rodriguez..... 33
 Zerner 37, 38

SLEEP APNEA

Elliott 30

SPECIAL PATIENT CARE

Austin 26

SUBSTANCE ABUSE

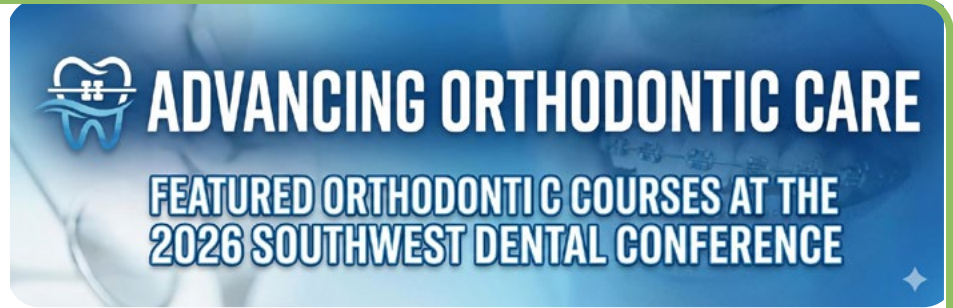
Plemons..... 46

TEMPOROMANDIBULAR DISORDER

S. Patel..... 35

Orthodontics plays a critical role in comprehensive, interdisciplinary patient care. At the 2026 Southwest Dental Conference, we are highlighting a series of orthodontic-focused courses designed to deepen clinical understanding, enhance collaboration with surgical partners, and improve outcomes for complex cases.

These sessions bring together orthodontists and oral and maxillofacial surgeons to explore treatment planning, surgical coordination, and case selection—equipping attendees with practical strategies they can apply immediately in practice.



Featured Orthodontic Courses

Orthodontic Set-Up for Surgical Cases

Patricia Simon, DDS
Saturday, 8:00–9:30 a.m.

Minimally Invasive Orthognathic Surgery and When to Combine TMJ Surgery

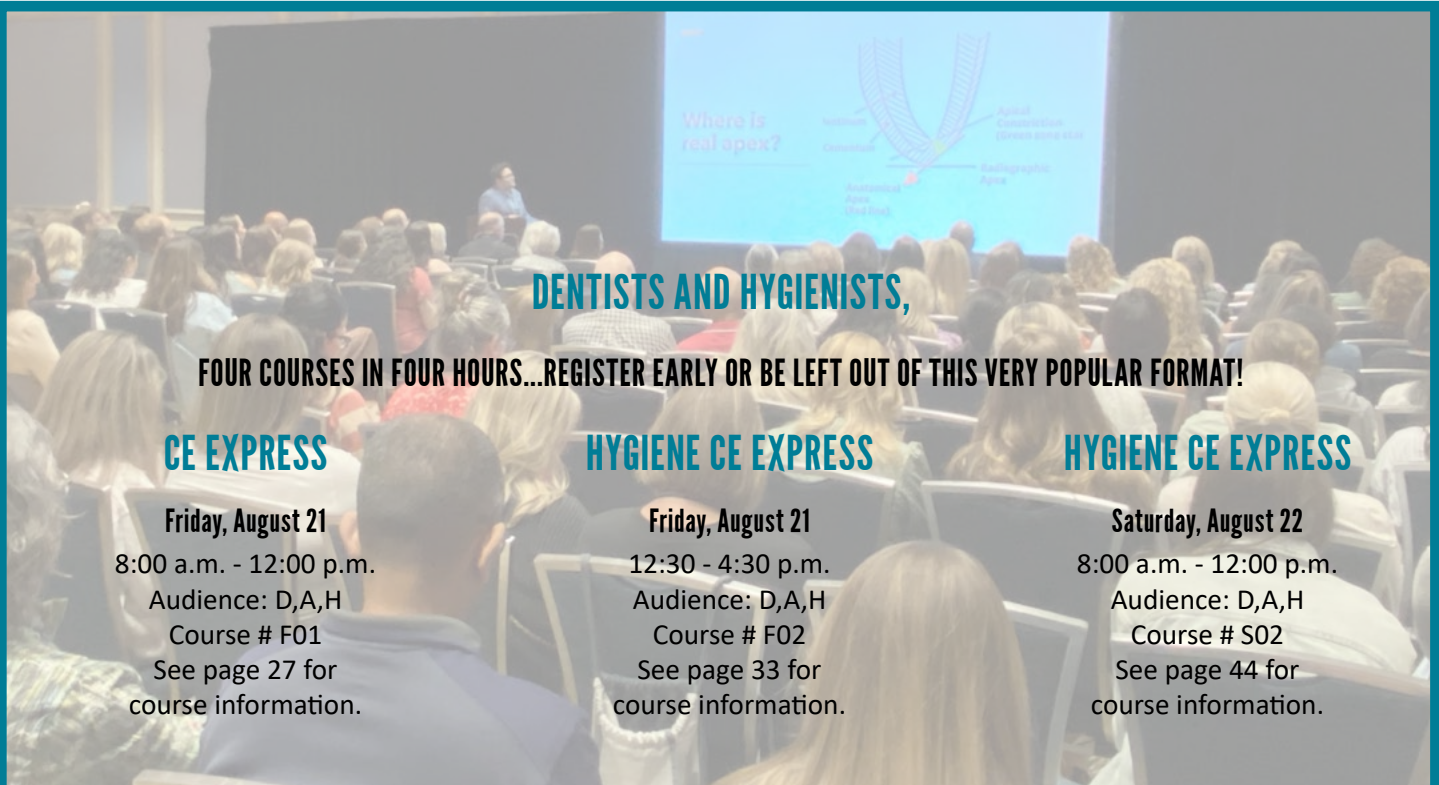
Andrew Arango, DDS, MD
Saturday, 10:00–11:30 a.m.

A Simplified Approach to Orthognathic Treatment Planning and Caring for the Cleft Patient

Patrick Wong, DDS, MD
Saturday, 12:30–2:00 p.m.

Cut to the Chase: Spotting and Setting Up Surgical Cases

Diana-Beatrix Velicu, DDS, MS
Saturday, 2:30–4:00 p.m.



DENTISTS AND HYGIENISTS,

FOUR COURSES IN FOUR HOURS...REGISTER EARLY OR BE LEFT OUT OF THIS VERY POPULAR FORMAT!

CE EXPRESS

Friday, August 21
8:00 a.m. - 12:00 p.m.
Audience: D,A,H
Course # F01
See page 27 for course information.

HYGIENE CE EXPRESS

Friday, August 21
12:30 - 4:30 p.m.
Audience: D,A,H
Course # F02
See page 33 for course information.

HYGIENE CE EXPRESS

Saturday, August 22
8:00 a.m. - 12:00 p.m.
Audience: D,A,H
Course # S02
See page 44 for course information.

Tickets must be purchased for entire CE Express session. Single presentation tickets are not available.

HIGHLIGHTS

FRIDAY, AUGUST 21

Joshua Austin, DDS

THE MENTAL DENTAL CONNECTION: THE SECRET TO BEING A BETTER CLINICIAN AND LEADER

9:00 a.m.-12:00 p.m.
Course #F22

Nathaniel Lawson, DMD, PhD

MATERIALS AND TECHNIQUES TO IMPROVE YOUR CONSERVATIVE, ADHESIVE DENTISTRY

8:00-11:00 a.m.
Course #F13

Paras Patel, DDS

AUTOIMMUNE AND INFLAMMATORY CONDITIONS OF THE ORAL CAVITY

8:00-11:00 a.m.
Course #F14

Meridan Zerner, MS, RDN, CSSD, LD, CHWC

DIMENSIONS OF WELLNESS: THE FUSION OF PHYSICAL, EMOTIONAL AND SOCIAL WELLBEING

8:00-11:00 a.m.
Course #F16

Karen Gregory, RN, CDIPC

WHAT YOU CAN'T SEE COULD HURT YOU: UNSEEN RISKS IN DENTAL CARE

2:00-5:00 p.m.
Course #F36

Kellye Kamp

OPEN WIDE FOR OPPORTUNITY: THE DRILL ON GENERATIVE AI IN BUSINESS

1:00-4:00 p.m.
Course #F27

Seena Patel, DMD, MPH

TOP 10 PHARMACOTHERAPEUTICS FOR OROFACIAL PAIN DISORDERS

1:30-4:30 p.m.
Course #F34

Andrew Read-Fuller, DDS, MD

AVOIDING DISASTERS: EMERGENCIES MANAGEMENT IN THE DENTAL OFFICE

1:00-4:00 p.m.
Course #F30



Tara Aghaloo, DDS, MD, PhD

STATE OF THE ART AND SCIENCE IN DENTAL IMPLANTS WITH FOCUS ON PREVENTION, DIAGNOSIS AND TREATMENT OF COMPLICATIONS

Audience: D

Time: 8:30-11:30 a.m.

Fee: \$55

Course #F17

CE Hours: 3 technical and/or scientific

AGD Subject Code: 690

LEARNING OBJECTIVES

- Recognize and classify the most common surgical, prosthetic, and biologic complications associated with dental implant therapy
- Integrate current evidence on systemic medical conditions and pharmacologic agents that influence implant osseointegration and long-term success
- Apply practical, evidence-based strategies to proactively prevent complications, diagnose problems at an early stage, and effectively manage unfavorable implant outcomes
- Incorporate emerging technologies and contemporary techniques to reduce risk and improve predictability in implant treatment planning and execution

Tara Aghaloo, DDS, MD, PhD

UPDATES IN ALVEOLAR RIDGE AUGMENTATION VS GRAFTLESS SOLUTIONS FOR FULL ARCH REHABILITATION

Audience: D

Time: 1:30-4:30 p.m.

Fee: \$55

Course #F32

CE Hours: 3 technical and/or scientific

AGD Subject Code: 490/690

LEARNING OBJECTIVES

- Develop comprehensive, restoratively driven treatment strategies for the edentulous and partially edentulous patient using both grafting and graft-less approaches
- Critically evaluate contemporary graft materials, techniques, and implant alternatives to manage routine and complex alveolar ridge defects, including previously failed grafting or implant cases
- Integrate advanced surgical techniques and emerging technologies to improve predictability, reduce morbidity, and minimize the need for extensive bone grafting
- Apply soft tissue augmentation principles to enhance keratinized mucosa, increase connective tissue volume, and optimize long-term implant stability and esthetic outcomes

Joshua Austin, DDS

THE MENTAL DENTAL CONNECTION: THE SECRET TO BEING A BETTER CLINICIAN AND LEADER

Audience: ALL

Time: 9:00 a.m.-12:00 p.m.

Fee: \$55

Course #F22

CE Hours: 3 technical and/or scientific

AGD Subject Code: 150/750

LEARNING OBJECTIVES

- Define mental health terms and analyze mental health statistics
- Illuminate common DSM-5 diagnoses and characteristics
- Identify and examine our psychologic triggers and their importance
- Review current neuropsychopharmacology and the connection to the mouth and oral health

Joshua Austin, DDS

THE TRUE VALUE OF DIGITAL DENTISTRY: A FOUR STEP REVOLUTION FOR YOUR PRACTICE

Audience: ALL

Time: 2:00-5:00 p.m.

Fee: \$55

Course #F35

CE Hours: 3 technical and/or scientific

AGD Subject Code: 610/780

LEARNING OBJECTIVES

- Explore the latest innovations and enhancements in intraoral scanning
- Learn how improved scanning amplifies practice and productivity
- Discover how these devices can close the gap of patient communication
- Recognize the true power of digital for your practice

CE EXPRESS

Audience: D,A,H

Time: 8:00 a.m.-12:00 p.m.

Fee: \$85 (all four courses)

Course #F01

CE Hours: 4 technical and/or scientific



David Witherspoon, BSc, MS

CARIES MANAGEMENT OF DEEP CARIOUS LESIONS: VITAL PULP THERAPY

8:00-9:00 a.m.

AGD Subject Code: 070

Rashmi Hegde, BDS, MS

BEYOND THE SMILE: THE ORAL-SYSTEMIC CONNECTION

9:00-10:00 a.m.

AGD Subject Code: 490

Marco Bergamini, DDS

THE PROSTHODONTIC IMPLANT PARADOX: CLINICAL GUIDELINES FOR CHOOSING BETWEEN FIXED AND REMOVABLE SOLUTIONS

10:00-11:00 a.m.

AGD Subject Code: 610/670/690

Edward P. Allen, DDS, PhD

21ST CENTURY SOFT TISSUE GRAFTING

11:00 a.m.-12:00 p.m.

AGD Subject Code: 490

Bruce Christopher, MA, MA, LP, CSP

BAMBI VS GODZILLA

Audience: ALL

Time: 8:00-11:00 a.m.

Fee: \$55

Course #F11

CE Hours: 3 non-technical

AGD Subject Code: 550

LEARNING OBJECTIVES

- Understand why people behave the way they do
- Learn the origins of negative behavior
- Discover how to not react to reactive people
- Develop strategies for dealing with six basic difficult personality types
- Create an energized climate and culture in your practice

Bruce Christopher, MA, MA, LP, CSP

WHY ARE WOMEN SO STRANGE AND MEN SO WEIRD?

Audience: ALL

Time: 1:00-4:00 p.m.

Fee: \$55

Course #F25

CE Hours: 3 non-technical

AGD Subject Code: 550

LEARNING OBJECTIVES

- Explore how men and women think, speak, and make decisions differently
- Learn how to apply strategies for increasing practice communication and effectiveness
- Create a re-energized practice culture and climate
- Learn to dazzle your patients by learning to speak their language
- Discover how to increase case acceptance rates

Shanetha Collier, DDS, MS, D-ABFO

AGE, BITES, COURT AND DECOMP: THE ABC'S OF FORENSIC DENTISTRY

Audience: D,A,H

Time: 1:00-4:00 p.m.

Fee: \$55

Course #F26

CE Hours: 3 technical and/or scientific

AGD Subject Code: 145

LEARNING OBJECTIVES

- Understand and become familiar with the main aspects of forensic dentistry
- Learn how the forensic dentist works in conjunction with other forensic scientists
- Gain knowledge using real life case examples of how a forensic dentist completes casework
- Recognize how your role as a dental practitioner helps the forensic dentist
- Understand how forensic dentistry can contribute to society as a whole

Andrew Day, MD, MPH

SURVIVORSHIP, SCREENING, AND HPV: IMPROVING OUTCOMES FOR THE HEAD AND NECK CANCER COMMUNITY

Audience: ALL

Time: 12:30-2:00 p.m.

Fee: \$30

Course #F24

CE Hours: 1.5 technical and/or scientific

AGD Subject Code: 150/730

We gratefully acknowledge UT Southwestern Medical Center for sponsoring this course.



LEARNING OBJECTIVES

- Understand the long-term physical, functional, and psychosocial challenges faced by survivors and how dental teams play a critical role in lifelong care and quality of life
- Develop confidence in recognizing early signs of head and neck cancer, including HPV-associated disease, and understand when timely referral can be life-changing
- Learn how evidence-based conversations, interdisciplinary collaboration, and patient education can directly improve outcomes for individuals and communities affected by head and neck cancer

Gary Dougan, DDS, MPH

CURRENT DENTAL INSURANCE LANDSCAPE: THINK LIKE THE INSURERS TO MAXIMIZE SUCCESS

Audience: ALL

Time: 8:30-11:30 a.m.

Fee: \$55

Course #F18

CE Hours: 3 non-technical

AGD Subject Code: 550

LEARNING OBJECTIVES

- Learn how dental benefit companies are organized and what drives them to design their insurance products
- Identify the stakeholders involved in the dental benefits business and how these stakeholders participate in the insurance design and implementation processes
- Discover how to package and prepare billing submissions understanding the benefit plan's operations
- Learn about utilization management, fraud-waste-abuse, and recent procedure code changes and updates

Gary Dougan, DDS, MPH

SECRETS OF SMOOTHER CLAIMS PROCESSING: TOP TEN REASONS CLAIMS ARE DENIED

Audience: ALL

Time: 1:30-4:30 p.m.

Fee: \$55

Course #F33

CE Hours: 3 non-technical

AGD Subject Code: 550

LEARNING OBJECTIVES

- Understand common reasons for claims denials by the dental insurance companies
- Learn what common mistakes offices make that lead to problems with getting reimbursed
- Discover what to do to set themselves up for increased success

Robert Edwab, DDS, MBA

ORAL SURGERY FOR THE GENERAL PRACTITIONER WORKSHOP

Audience: D

Time: 8:00-11:00 a.m.

Fee: \$385

Course #F03

CE Hours: 3 technical and/or scientific

AGD Subject Code: 310

LEARNING OBJECTIVES

- Review proper instrumentation
- Learn suturing techniques
- Become familiar with extraction techniques
- Learn surgical removal of a frenum
- Discover excisional biopsy techniques

Robert Edwab, DDS, MBA

ORAL SURGERY FOR THE GENERAL PRACTITIONER WORKSHOP (REPEAT)

Audience: D

Time: 1:00-4:00 p.m.

Fee: \$385

Course #F07

CE Hours: 3 technical and/or scientific

AGD Subject Code: 310

LEARNING OBJECTIVES

- Review proper instrumentation
- Learn suturing techniques
- Become familiar with extraction techniques
- Learn surgical removal of a frenum
- Discover excisional biopsy techniques

Erin Elliott, DDS

SLEEP APNEA: TIME TO WAKE UP! INTRODUCTION TO SCREENING PATIENTS IN YOUR PRACTICE

Audience: ALL

Time: 8:00-11:00 a.m.

Fee: \$55

Course #F12

CE Hours: 3 technical and/or scientific

AGD Subject Code: 730

LEARNING OBJECTIVES

- Provide an overview of sleep and sleep apnea
- Discover health consequences of untreated sleep apnea
- Establish awareness in the hygiene department
- Review and become familiar with sleep studies and what they mean
- Explore treatment options
- Discover how an oral appliance works and oral appliance selection
- Review record taking for an oral appliance

Erin Elliott, DDS

TAKE A BITE OUT OF THE SLEEP APNEA PROBLEM IN YOUR PRACTICE WORKSHOP

Audience: D

Time: 12:30-3:30 p.m.

Fee: \$235

Course #F05

CE Hours: 3 technical and/or scientific

AGD Subject Code: 730

LEARNING OBJECTIVES

- Learn how to select the best appliance for each of your patients
- Discover how to take accurate full-arch digital or analog impressions to fabricate a sleep appliance
- Become familiar with capturing an accurate protrusive bite utilizing a novel instrument

Midwest Dental Equipment & Supply

EQUIPMENT MAINTENANCE AND REPAIR WORKSHOP

Audience: ALL

Time: 9:00 a.m.-11:00 a.m. repeating 1:00-3:00 p.m.

Fee: \$75

AM Course #F04

PM Course #F06

CE Hours: 2 non-technical

AGD Subject Code: 550

Co-sponsored and facilitated by
 Midwest Dental Equipment & Supply



LEARNING OBJECTIVES

- Become familiar with sterilization and lab equipment
- Discover how to fix/maintain syringes and vacuum systems and make equipment adjustments
- Review delivery unit maintenance and shock procedures
- Become familiar with mechanical room maintenance
- Review x-ray imaging and compliance

Mia Geisinger, DDS, MS

ORAL REGENERATION CAN BE A STICKY SITUATION AND L-PRF CAN HELP!

Audience: D,A

Time: 8:30-11:30 a.m.

Fee: \$55

Course #F19

CE Hours: 3 technical and/or scientific

AGD Subject Code: 490

This lecture is mandatory to attend workshop course #F09.

LEARNING OBJECTIVES

- Identify different platelet concentrates (PCs), preparation protocols, and the advantages and disadvantages of these PC for use in oral surgical procedures
- Describe the effect of PCs on the different cells involved in the regeneration of oral tissues and the evidence of how these impact healing after oral surgical procedures
- Evaluate the clinical applications for the adjunctive use of PCs to improve oral hard and soft tissue regeneration outcomes

Mia Geisinger, DDS, MS

ORAL REGENERATION CAN BE A STICKY SITUATION AND L-PRF CAN HELP! WORKSHOP

Audience: D,A

Time: 1:30-4:30 p.m.

Fee: \$260

Course #F09

CE Hours: 3 technical and/or scientific

AGD Subject Code: 490

Course #F19 is a prerequisite for this workshop.

LEARNING OBJECTIVES

- Review clinical indications for use of PCs and L-PRF
- Assess currently available materials and clinical protocols for various uses in oral regeneration
- Develop skills to harvest and prepare L-PRF for use in a variety of clinical scenarios based upon the individual patient needs and clinical presentations

Karen Gregory, RN, CDIPC

**FROM EXPOSURE REPORTS TO EYEWASH STATIONS:
 ENSURING OSHA COMPLIANCE IN YOUR PRACTICE**

Audience: ALL

Time: 9:00 a.m.-12:00 p.m.

Fee: \$55

Course #F23

CE Hours: 3 technical and/or scientific

ADA Subject Code: 148

LEARNING OBJECTIVES

- Identify the signs, symptoms, and modes of transmission for HIV, Hepatitis B, and Hepatitis C
- Describe the required steps for managing and documenting an occupational blood exposure
- Recognize required labeling elements on hazardous chemical containers used in dental settings
- Explain the appropriate response when OSHA arrives at the dental practice

Karen Gregory, RN, CDIPC

**WHAT YOU CAN'T SEE COULD HURT YOU:
 UNSEEN RISKS IN DENTAL CARE**

Audience: ALL

Time: 2:00-5:00 p.m.

Fee: \$55

Course #F36

CE Hours: 3 technical and/or scientific

ADA Subject Code: 148

LEARNING OBJECTIVES

- Identify opportunities for exposure to blood, bloody saliva, and contaminated instruments throughout the delivery of oral healthcare
- Differentiate between dental unit waterlines and evacuation lines in function and maintenance
- Define four (4) critical steps required to ensure instruments are safe for patient use
- Learn how to apply practical strategies to strengthen infection prevention across clinical and reprocessing workflows

Kellye Kamp

**OPEN WIDE FOR OPPORTUNITY – THE DRILL ON GENERATIVE AI
 IN BUSINESS**

Audience: ALL

Time: 1:00-4:00 p.m.

Fee: \$55

Course #F27

CE Hours: 3 non-technical

AGD Subject Code: 550

LEARNING OBJECTIVES

- Learn how to use GenAI in practical, low-cost ways in everyday dental operations
- Discover how to automate administrative tasks, freeing up your staff to focus on patient relationships
- Learn to simplify and improve patient communication with AI-generated reports, scripts, emails and education materials
- Utilize AI to uncover hidden revenue opportunities and streamline decision-making
- Discover how AI can support smarter business planning, staffing decisions and overhead reduction

HYGIENE CE EXPRESS

Audience: D,A,H

Time: 12:30-4:30 p.m.

Fee: \$85 (all four courses)

Course #F02

CE Hours: 4 technical and/or scientific



Allison Rodriguez, RDH

THE IMPORTANCE OF SELF-CARE FOR THE ORAL HEALTHCARE PROVIDER

12:30-1:30 p.m.

AGD Subject Code: 150/770

Jane Cotter, RDH, MS, CTTS

GETTING CREATIVE: ALTERNATE FULCRUMS, INSTRUMENTATION AND ROOT MORPHOLOGY

1:30-2:30 p.m.

AGD Subject Code: 010

Kayla Reed, EdD, RDH

LEVELING-UP ON RADIOGRAPHIC TRAINING: THE ROLE OF AUGMENTED REALITY IN DENTAL HYGIENE EDUCATION AND BEYOND

2:30-3:30 p.m.

AGD Subject Code: 010

Partha Mukherji, DDS

READY TO BEVEL UP! TIPS AND TRICKS FOR CONFIDENT LOCAL INFILTRATION ANESTHESIA

3:30-4:30 p.m.

AGD Subject Code: 340

Nathaniel Lawson, DMD, PhD

MATERIALS AND TECHNIQUES TO IMPROVE YOUR CONSERVATIVE, ADHESIVE DENTISTRY

Audience: D,A,T

Time: 8:00-11:00 a.m.

Fee: \$55

Course #F13

CE Hours: 3 technical and/or scientific

AGD Subject Code: 010/250

LEARNING OBJECTIVES

- Incorporate step-by-step guides for preparing, temporizing and bonding ceramic onlays and resin-bonded bridges
- Discover how to choose a ceramic material for anterior restorations
- Understand preparation and design considerations for posterior crowns and bridges
- Develop strategies to adjust, polish and cut off ceramic crowns
- Discuss the rationale for when to use different types of cements
- Implement a step-by-step procedure for cementing or bonding crowns

Nathaniel Lawson, DMD, PhD

**MATERIALS AND TECHNIQUES
TO IMPROVE POSTERIOR COMPOSITES**

Audience: D,A

Time: 1:00-4:00 p.m.

Fee: \$55

Course #F28

CE Hours: 3 technical and/or scientific

AGD Subject Code: 010/250

LEARNING OBJECTIVES

- Discuss treatment guidelines for interproximal caries and caries removal endpoints
- Discover materials and techniques to promote a long lasting adhesive bond and create a well-adapted restoration
- Learn how to analyze matrix utilization and contouring instruments to achieve a tight and well-contoured contact

Edwin “Mac” McDonald, DDS

THE ART AND SCIENCE OF PROVISIONAL RESTORATIONS

Audience: A

Time: 8:30-11:30 a.m.

Fee: \$55

Course #F20

CE Hours: 3 technical and/or scientific

AGD Subject Code: 250

LEARNING OBJECTIVES

- Review the fundamentals of dental anatomy, occlusion, and esthetics
- Learn techniques for full crowns, onlays, veneers, bridges, and implants
- Compare various provisional techniques, modifications, and repairs
- Become familiar with the instruments and materials needed to fabricate provisionals
- Discover products that contribute to provisional success

Edwin “Mac” McDonald, DDS

**THE ART AND SCIENCE OF
PROVISIONAL RESTORATIONS WORKSHOP**

Audience: A

Time: 1:30-4:30 p.m.

Fee: \$235

Course #F10

CE Hours: 3 technical and/or scientific

AGD Subject Code: 250

LEARNING OBJECTIVES

- Review the fundamentals of dental anatomy, occlusion and esthetics
- Create beautiful and anatomically correct molar and incisor provisionals
- Become familiar with specific instruments and materials for contouring and polishing
- Learn the materials and techniques for modifying and repairing provisionals

We gratefully acknowledge Brasseler USA and Kettenbach Dental for sponsoring workshop supplies.



**BRASSLER
USA**



Paras Patel, DDS

AUTOIMMUNE AND INFLAMMATORY CONDITIONS OF THE ORAL CAVITY

Audience: ALL

Time: 8:00-11:00 a.m.

Fee: \$55

Course #F14

CE Hours: 3 technical and/or scientific

AGD Subject Code: 730

LEARNING OBJECTIVES

- Identify the clinical manifestations of specific inflammatory conditions
- Become familiar with discussing the etiopathogenesis of the inflammatory conditions with their patients
- Gain knowledge on how to obtain a definitive diagnosis as well as understand the treatment options that are available for patient management

Paras Patel, DDS

CHALLENGING CASES IN ORAL PATHOLOGY

Audience: ALL

Time: 1:00-4:00 p.m.

Fee: \$55

Course #F29

CE Hours: 3 technical and/or scientific

AGD Subject Code: 730

LEARNING OBJECTIVES

- Gain knowledge about the etiopathogenesis of specific disease processes and gain confidence in discussing necessary steps as well as their thoughts about these diseases
- Understand the importance of a good clinical examination and the necessity of reviewing the patient's medical history. The attendee will learn the relevant questions to ask to obtain critical pieces of information to aid in obtaining a diagnosis
- Determine what key pieces of clinical information are necessary to obtain a definitive diagnosis and be able to determine what clinical findings may represent red herrings
- Recognize the clinical manifestations of specific pathologic diseases

Seena Patel, DMD, MPH

MY JAW HURTS! WHAT DO I DO? AN OVERVIEW OF TEMPOROMANDIBULAR DISORDERS, DIAGNOSIS AND MANAGEMENT

Audience: D,H

Time: 8:30-11:30 a.m.

Fee: \$55

Course #F21

CE Hours: 3 technical and/or scientific

AGD Subject Code: 200/340

LEARNING OBJECTIVES

- Identify patients with TMDs and treat uncomplicated conditions.
- Define the specific TMD diagnoses
- Learn how to manage TMDs through non-pharmacological methods, including splint therapy, interventional therapy, and physical medicine
- Discover how to select, administer and prescribe pharmacological agents in the treatment of TMDs

Seena Patel, DMD, MPH

TOP 10 PHARMACOTHERAPEUTICS FOR OROFACIAL PAIN DISORDERS

Audience: D,H

Time: 1:30-4:30 p.m.

Fee: \$55

Course #F34

CE Hours: 3 technical and/or scientific

AGD Subject Code: 200/340

LEARNING OBJECTIVES

- Become familiar with the appropriate medications for arthrogenous, myogenous and neuropathic disorders
- Describe the mechanism of action of pharmacotherapeutics for orofacial pain
- Discover the adverse effects of common medications in orofacial pain

Andrew Read-Fuller, DDS, MD

AVOIDING DISASTERS: EMERGENCY MANAGEMENT IN THE DENTAL OFFICE

Audience: All

Time: 1:00-4:00 p.m.

Fee: \$55

Course #F30

CE Hours: 3 technical and/or scientific

AGD Subject Code: 142

LEARNING OBJECTIVES

- Recognize the warning signs of impending emergencies
- Review proper protocols for managing the most common emergencies in the dental office
- Understand the most important drugs and equipment that every dentist should have
- Consider the best practices for training and implementing a team approach to emergency management

Chafic Safi, DMD, MS

ANATOMICALLY CENTERED ENDODONTICS

Audience: D

Time: 8:00-11:00 a.m.

Fee: \$55

Course #F15

CE Hours: 3 technical and/or scientific

AGD Subject Code: 070

LEARNING OBJECTIVES

- Become familiar with the scientifically based biologic requirements for endodontic success
- Understand the meaning of minimally invasive endodontics
- Discover the latest generation of minimally invasive technologies that allows us to clinically obtain the essential biologic goals

Presented in part with an educational grant by Brasseler USA.



Chafic Safi, DMD, MS

ANATOMICALLY CENTERED ENDODONTICS WORKSHOP

Audience: D

Time: 1:00-4:00 p.m.

Fee: \$235

Course #F08

CE Hours: 3 technical and/or scientific

AGD Subject Code: 070

Presented in part with an educational grant by Brasseler USA.



LEARNING OBJECTIVES

- Become familiar with the scientifically based biologic requirements for endodontic success
- Understand the meaning of minimally invasive endodontics
- Discover the latest generation of minimally invasive technologies that allows us to clinically obtain the essential biologic goals

Stephanie Savory, MD

ORAL MANIFESTATIONS OF CUTANEOUS DISEASE

Audience: D,A,H

Time: 2:30-4:00 p.m.

Fee: \$30

Course #F37

CE Hours: 1.5 technical and/or scientific

AGD Subject Code: 150/730

We gratefully acknowledge UT Southwestern Medical Center for sponsoring this course.



LEARNING OBJECTIVES

- Become familiar with common and rare presentations of oral pathology such as lichen planus, pemphigus vulgaris, psoriasis, Behcet's disease, Addison's disease, among others
- Review of initial management as well as more in depth, focal treatment of specific conditions
- Identify referrals that may need to be recommended for further care and follow up



Meridan Zerner, MS, RDN, CSSD, LD, CHWC

DIMENSIONS OF WELLNESS: THE FUSION OF PHYSICAL, EMOTIONAL AND SOCIAL WELLBEING

Audience: ALL

Time: 8:00-11:00 a.m.

Fee: \$55

Course #F16

CE Hours: 3 technical and/or scientific

AGD Subject Code: 150

LEARNING OBJECTIVES

- Define the concept of holistic wellness and explain the purpose of the Wellness Wheel
- Assess personal wellness in each dimension to identify strengths and areas for improvement
- Explore the pivotal role of nutrition and physical activity in promoting energy, resilience, and disease prevention
- Identify small, sustainable behavior shifts that support well-being across all dimensions
- Recognize how social and emotional health impact physical wellness and vice versa
- Review and commit to a "I-thing" that will inspire a more balanced and fulfilling life

Meridan Zerner, MS, RDN, CSSD, LD, CHWC

THE THOUGHTFUL 30: 30 DAY WELLNESS RESET

Audience: ALL

Time: 1:00-4:00 p.m.

Fee: \$55

Course #F31

CE Hours: 3 technical and/or scientific

AGD Subject Code: 150

LEARNING OBJECTIVES

- Learn the relationship between sleep, circadian rhythms, and metabolic health, including effects on leptin, ghrelin, and insulin sensitivity
- Describe the role of hydration in cognitive function, digestion, metabolism, and appetite regulation, including daily fluid needs
- Differentiate between soluble and insoluble fiber, explaining their functions in blood glucose regulation, cholesterol reduction, bowel health, and microbiome diversity
- Evaluate protein needs across the lifespan, with an emphasis on increased requirements for adults over 40 to support muscle mass, satiety, and metabolic health
- Identify lifestyle factors such as mindful movement, sustainable dietary choices, savvy supplementation and social connection, that influence your mind and body wellness
- Develop YOUR personalized health strategy using the 10 Power Pillars!

HIGHLIGHTS

SATURDAY, AUGUST 22

Michael Fling, DDS

THE BALANCE OF OCCLUSION AND ESTHETICS

8:30-11:30 a.m.

Course #S18

Waldemar Polido, DDS, MS, PhD

EXTRACTION, IMPLANT AND GRAFT, WHEN TO DO WHAT?

8:30-11:30 a.m.

Course #S20

Jonathan Ng, DDS, MSc

BEYOND THE MOLD: 3D PRINTING AND DIGITAL IMPRESSIONS FOR TODAY'S DENTIST

8:00-11:00 a.m.

Course #S15

Jacqueline Plemons, DDS, MS

PRESCRIBING CONTROLLED SUBSTANCES: DRUGS, MONITORING AND STANDARDS OF CARE

8:00 a.m.-12:00 p.m.

Course #S17

William "Bo" Bruce, DMD

VENEER PREP "BLUEPRINT": FROM PREP TO PROVISIONALS WORKSHOP

1:00-4:00 p.m.

Course #S03

Timothy Donley, DDS, MSD

REDUCING PERIODONTAL INFLAMMATION THROUGH NUTRITION: MACRO-NUTRITIONAL RECOMMENDATIONS THAT CAN MAKE A DIFFERENCE

1:00-4:00 p.m.

Course #S24

Jeanette MacLean, DDS

HALL TECHNIQUE AND ATRAUMATIC GLASS IONOMER STRIP CROWNS WORKSHOP

1:00-4:00 p.m.

Course #S05

Randy Sanovich, DDS

Shaun Young, DMD

EXTRACTION TO REGENERATION: MULTIMODAL APPROACHES FOR ALVEOLAR RIDGE AND SOFT TISSUE RECONSTRUCTION WORKSHOP

1:00-4:00 p.m.

Course #S07



Jaime Almandoz, MD, MBA, FTOS

**TRANSFORMING OBESITY CARE:
FROM WEIGHT LOSS TO HEALTH GAINS**

Audience: ALL

Time: 8:00-11:00 a.m.

Fee: \$55

Course #S10

CE Hours: 3 technical and/or scientific

AGD Subject Code: 150

We gratefully acknowledge UT Southwestern Medical Center for sponsoring this course.



LEARNING OBJECTIVES

- Describe the prevalence and burden of obesity in the United States
- Understand the mechanisms, efficacy and safety profiles of current and emerging anti-obesity pharmacotherapies
- Recognize the evidence supporting obesity treatment for reducing cardiometabolic risk
- Review the indications and expected outcomes of bariatric surgery
- Identify nutrition principles for patients with obesity who are receiving anti-obesity medications
- Engage in informed discussion and address common questions about obesity management

Larry Anderson, MD, PhD

**CHIMERIC ANTIGEN RECEPTOR (CAR) T-CELL THERAPY:
HISTORY, PRESENT AND FUTURE DIRECTIONS**

Audience: ALL

Time: 12:00-1:30 p.m.

Fee: \$30

Course #S22

CE Hours: 1.5 technical and/or scientific

AGD Subject Code: 150

We gratefully acknowledge UT Southwestern Medical Center for sponsoring this course.



LEARNING OBJECTIVES

- Review the history of CAR T-Cell therapy
- Become familiar with the process of CAR T-Cell production
- Identify expected side effects of CAR T-Cells
- Understand current FDA indications for CAR T-Cell therapy in ALL, NHL, and Multiple Myeloma
- Learn how to describe emerging data regarding use of CAR T-Cells

Andrew Arango, DDS, MD

**MINIMALLY INVASIVE ORTHOGNATHIC AND
WHEN TO COMBINE TMJ SURGERY**

Audience: D

Time: 10:00-11:30 a.m.

Fee: \$30

Course #S21

CE Hours: 1.5 technical and/or scientific

AGD Subject Code: 310/370

LEARNING OBJECTIVES:

- Understand the principles and benefits of minimally invasive orthognathic surgery, including how modern planning and surgical techniques improve precision, recovery time, and long-term outcomes
- Recognize clinical scenarios in which TMJ pathology should be addressed concurrently with orthognathic surgery, and understand the rationale for combined surgical approaches
- Appreciate the importance of interdisciplinary coordination among oral surgeons, orthodontists, dentists, and the dental team to optimize treatment planning, execution, and patient communication

William “Bo” Bruce, DMD

**TREATMENT PLANNING “SIMPLIFIED”:
 THREE EASY STEPS TO SUCCESS**

Audience: D,A,T

Time: 8:00-11:00 a.m.

Fee: \$55

Course #S11

CE Hours: 3 technical and/or scientific

AGD Subject Code: 250

LEARNING OBJECTIVES

- Become familiar with the three steps to delivering exceptional esthetics with any case
- Understand the functional smile design checklist
- Gain knowledge of complex functional and esthetic cases

William “Bo” Bruce, DMD

**VENEER PREP “BLUEPRINT”:
 FROM PREP TO PROVISIONALS WORKSHOP**

Audience: D,A,T

Time: 1:00-4:00 p.m.

Fee: \$260

Course #S03

CE Hours: 3 technical and/or scientific

AGD Subject Code: 250

Attendees should bring loupes.

LEARNING OBJECTIVES

- Define an anterior case esthetically and functionally
- Create the perfect mock-up
- Utilize innovative materials to create guides for the perfect veneer prep

Isaac Chan, MD, PhD

PRECISION ONCOLOGY

Audience: ALL

Time: 2:00-3:30 p.m.

Fee: \$30

Course #S26

CE Hours: 1.5 technical and/or scientific

AGD Subject Code: 150

We gratefully acknowledge UT Southwestern Medical Center for sponsoring this course.



LEARNING OBJECTIVES

- Explore how genomic profiling, molecular diagnostics, and targeted therapies are reshaping cancer treatment from a one-size-fits-all approach to truly personalized medicine
- Recognize how advances in immunotherapy, targeted agents, and biomarker-driven treatment are improving survival, reducing toxicity, and enhancing quality of life
- Gain insight into emerging technologies, clinical trials, and translational research that will define the next decade of oncology and influence how all healthcare professionals support cancer patients

Timothy Donley, DDS, MSD

COLLABORATION WITH MEDICINE: WHAT IT LOOKS LIKE IN A BUSY PRACTICE

Audience: D,A,H

Time: 8:00-11:00 a.m.

Fee: \$55

Course #S12

CE Hours: 3 technical and/or scientific

AGD Subject Code: 150

LEARNING OBJECTIVES

- Discover a chairside protocol for identifying patients in your office which could benefit from collaborative care
- Gain the medical knowledge to speak confidently with medical colleagues
- Learn how to effectively communicate with patients about their overall health
- Learn what medicine wants from dentistry and how to deliver it
- Review practice management resources which you can use to educate and motivate your patients

Timothy Donley, DDS, MSD

REDUCING PERIODONTAL INFLAMMATION THROUGH NUTRITION: MACRO-NUTRITIONAL RECOMMENDATIONS THAT CAN MAKE A DIFFERENCE

Audience: D,A,H

Time: 1:00-4:00 p.m.

Fee: \$55

Course #S24

CE Hours: 3 technical and/or scientific

AGD Subject Code: 150/490

LEARNING OBJECTIVES

- Become familiar with a chairside routine to efficiently incorporate nutritional intervention into your practice
- Understand how different nutritional intakes can affect periodontal disease
- Review evidence for the specific nutritional recommendations you can make to your patients
- Discover practice management resources which you can use to educate and motivate your patients

Michael Fling, DDS

THE BALANCE OF OCCLUSION AND ESTHETICS

Audience: D,A,H,T

Time: 8:30-11:30 a.m.

Fee: \$55

Course #S18

CE Hours: 3 technical and/or scientific

AGD Subject Code: 180/250

LEARNING OBJECTIVES

- Learn how to replicate Arc of Closure
- Identify the anterior and posterior determinates of occlusion
- Understand why Arc of Rotation must be considered
- Determine VDO and when VDO should be altered
- Explore appropriate cusp/fossa relationships
- Discover why angle of disclusion matters
- Learn how occlusal patterns affect aesthetics
- Identify ideal concepts of anterior aesthetics
- Discover which parafunctional patterns are least predictable
- Recognize when long centric should be used
- Discover which splint is best for a given circumstance

Michael Fling, DDS

TREATING SEVERE DENTAL WEAR

Audience: D,A,H,T

Time: 1:30-4:30 p.m.

Fee: \$55

Course #S25

CE Hours: 3 technical and/or scientific

AGD Subject Code: 180/250

LEARNING OBJECTIVES

- Evaluate the possible etiologies of severe wear
- Learn how to take a simple CR record
- Discover why the diagnostic wax-up is so important
- Investigate which occlusal scheme is best for predictability
- Learn how to evaluate VDO and angle of disclusion
- Establish how to test the case before final restorations are placed
- Evaluate other physical considerations of severe wear such as obstructed airway
- Determine which type of splint to use pre and post reconstruction
- Become familiar with prep design and restorative materials indications for severe wear

Greg Folse, DDS

DIFFICULT DENTURE PATIENTS: REAL-WORLD SOLUTIONS

Audience: D,T

Time: 8:00-11:00 a.m.

Fee: \$55

Course #S13

CE Hours: 3 technical and/or scientific

AGD Subject Code: 250/670

This lecture is mandatory to attend workshop course #S04.

LEARNING OBJECTIVES

- Learn how to ensure exact impression borders
- Become familiar with a 5-10 minute Occlusal Rim Technique
- Discover how to precisely and repetitively take an accurate bite
- Learn how to decrease patient sore spots and increase patient denture satisfaction
- Discover how to decrease denture chair time and have more fun with prosthetics

Greg Folse, DDS

DIFFICULT DENTURE PATIENTS: REAL-WORLD SOLUTIONS WORKSHOP

Audience: D,T

Time: 1:00-4:00 p.m.

Fee: \$260

Course #S04

CE Hours: 3 technical and/or scientific

AGD Subject Code: 250/670

Course #S13 is a prerequisite for this workshop.

LEARNING OBJECTIVES

- Learn how to ensure exact impression borders
- Become familiar with a 5-10 minute Occlusal Rim Technique
- Discover how to precisely and repetitively take an accurate bite
- Learn how to decrease patient sore spots and increase patient denture satisfaction
- Discover how to decrease denture chair time and have more fun with prosthetics

HYGIENE CE EXPRESS

Audience: D,A,H

Time: 8:00 a.m.-12:00 p.m.

Fee: \$85 (all four courses)

Course #S02

CE Hours: 4 technical and/or scientific



Sarabeth Ballard, RDH

THINGS YOU WISH YOU KNEW ABOUT SHARPENING

8:00-9:00 a.m.

AGD Subject Code: 010

Melanie Boyd, BS, RDH

BEYOND THE BLIND SRP: DIVING INTO PERIODONTAL ENDOSCOPE THERAPY

9:00-10:00 a.m.

AGD Subject Code: 490

Chad Perry, DDS

CARING FOR THE WHOLE PATIENT: HOLISTIC STRATEGIES FOR THE DENTAL PRACTICE

10:00-11:00 a.m.

AGD Subject Code: 250

Nicholas Tipton, DDS

IMPLANTS IN MAINTENANCE: RED FLAG'S HYGIENIST'S SHOULD NOT IGNORE

11:00 a.m.-12:00 p.m.

AGD Subject Code: 690

Gabrielle Jackson, DDS, MS

MANAGING PROSTHETIC IMPLANT COMPLICATIONS

Audience: D

Time: 8:30-11:30 a.m.

Fee: \$55

Course #S19

CE Hours: 3 technical and/or scientific

AGD Subject Code: 610/670/690

LEARNING OBJECTIVES

- Discuss a variety of complications with prosthetic procedures
- Understand common diagnosis failures that commonly lead to complications
- Identify potential risk factors to consider and pitfalls to avoid when treatment planning
- Review different techniques to manage complications
- Learn effective communication to manage patient expectations while treating complications

Jeanette MacLean, DDS

WHAT'S NEW IN MOLAR INCISOR HYPOMINERALIZATION MANAGEMENT

Audience: D,A,H

Time: 8:00-11:00 a.m.

Fee: \$55

Course #S14

CE Hours: 3 technical and/or scientific

AGD Subject Code: 430.

LEARNING OBJECTIVES

- Review the clinical challenges of managing MIH
- Describe the clinical use of SDF, ART and the Hall Technique
- Become familiar with the clinical use of MI Paste, Icon Resin Infiltration and Etch Bleach Seal

Jeanette MacLean, DDS

HALL TECHNIQUE AND ATTRAUMATIC GLASS IONOMER STRIP CROWNS WORKSHOP

Audience: D

Time: 1:00-4:00 p.m.

Fee: \$260

Course #S05

CE Hours: 3 technical and/or scientific

AGD Subject Code: 430

Attendees should bring loupes.

LEARNING OBJECTIVES

- Describe the case selection materials and clinical protocol of Hall Technique
- Review the clinical protocol of GIC ART strip crowns
- Discover the pros and cons for each technique

Jonathan Ng, DDS, MSc

BEYOND THE MOLD: 3D PRINTING AND DIGITAL IMPRESSIONS FOR TODAY'S DENTIST

Audience: D,A,H,T

Time: 8:00-11:00 a.m.

Fee: \$55

Course #S15

CE Hours: 3 technical and/or scientific

AGD Subject Code: 010/250

LEARNING OBJECTIVES

- Learn how to compare and contrast traditional impression techniques with digital intraoral scanning, including accuracy, efficiency, and patient comfort
- Identify applications of 3D printing technology in a general dentistry practice (e.g., models, surgical guides, aligners)
- Describe the basic workflow of incorporating digital impressions and 3D printing into a dental practice, from scanning to final product

Jonathan Ng, DDS, MSc

MASTERING DIGITAL IMPRESSIONS- A SIMPLE GUIDE TO SCANNING TEETH AND IMPLANTS WORKSHOP

Audience: D,A

Time: 1:00-4:00 p.m.

Fee: \$235

Course #S06

CE Hours: 3 technical and/or scientific

AGD Subject Code: 010/250/690

Attendees should bring loupes with a light.

LEARNING OBJECTIVES

- Describe the fundamental principles and workflows of digital impression taking
- Identify the appropriate settings for scanning in various clinical situations
- Identify and troubleshoot common errors encountered during the digital impression process
- Become familiar with best practices for optimizing digital impressions to ensure predictable restorative outcomes

Jacqueline Plemons, DDS, MS

PRESCRIBING CONTROLLED SUBSTANCES: DRUGS, MONITORING AND STANDARDS OF CARE

Audience: D,A,H

Time: 8:00 a.m.-12:00 p.m.

Fee: \$75

Course #S17

CE Hours: 4 technical and/or scientific

AGD Subject Code: 157/340

LEARNING OBJECTIVES

- Understand the nature and magnitude of the opioid epidemic in the US and Texas
- Learn how controlled substances work to control pain
- Discover safe and effective pain management techniques
- Review approved procedures for prescribing and monitoring controlled substances

This course meets the CE requirements of the Texas State Board of Dental Examiners related to approved procedures of prescribing and monitoring controlled substances, combining all dentists' controlled substance CE requirements into a single four-hour course. The TSBDE will count two hours of CE required for DEA permit holders towards the four hours of CE required for all dentists providing direct patient care. Upon completing this four-hour course, required hours are met for both requirements.



Waldemar Polido, DDS, MS, PhD

EXTRACTION, IMPLANT AND GRAFT, WHEN TO DO WHAT?

Audience: D,A,H

Time: 8:30-11:30 a.m.

Fee: \$55

Course #S20

CE Hours: 3 technical and/or scientific

AGD Subject Code: 310/690

LEARNING OBJECTIVES

- Evaluate esthetic risk in the implant patient, enabling smarter decision-making in the anterior zone and more predictable esthetic outcomes
- Master the timing of extraction, grafting, and implant placement, understanding when immediate, delayed, or staged approaches provide the greatest benefit
- Apply practical, evidence-based techniques for immediate implant placement and tissue augmentation, minimizing complications while maximizing soft- and hard-tissue stability in the esthetic zone

Waldemar Polido, DDS, MS, PhD

PHOTOGRAPHY TIPS FOR THE CLINICIAN WORKSHOP

Audience: D,A,H,T

Time: 1:30-4:30 p.m.

Fee: \$205

Course #S08

CE Hours: 3 technical and/or scientific

AGD Subject Code: 138

Attendees should bring camera with a flash.

DO NOT buy a new camera, please use what you have.

A phone camera will work.

LEARNING OBJECTIVES

- Learn how high-quality clinical photography transforms communication, improving patient understanding, case acceptance, and documentation of care
- Select and use essential photographic equipment, enabling consistent, professional-level images in everyday clinical practice
- Implement a streamlined office workflow for clinical photography, including team training, delegation, and integration into routine patient visits
- Utilize practical software solutions to efficiently store, edit, and present clinical photographs for patient education, documentation, and interdisciplinary communication

Randy Sanovich, DDS

Shaun Young, DMD

FROM EXTRACTION TO REGENERATION: MULTIMODAL APPROACHES FOR ALVEOLAR RIDGE AND SOFT TISSUE RECONSTRUCTION

Audience: D

Time: 8:00-11:00 a.m.

Fee: \$55

Course #S16

CE Hours: 3 technical and/or scientific

AGD Subject Code: 690

LEARNING OBJECTIVES

- Understand the biological principles and material properties of allograft-xenograft combinations in ridge augmentation
- Identify clinical indications and benefits of alveolar socket preservation in implant site development
- Recognize surgical protocols for lateral and vertical bone regeneration
- Describe the role of customized titanium mesh in managing complex ridge defects
- Learn how to integrate soft tissue augmentation techniques to enhance long-term regenerative outcomes
- Gain knowledge to apply stepwise workflows for predictable, esthetic ridge reconstruction

Randy Sanovich, DDS
Shaun Young, DMD

**EXTRACTION TO REGENERATION:
MULTIMODAL APPROACHES FOR ALVEOLAR RIDGE AND
SOFT TISSUE RECONSTRUCTION WORKSHOP**

Audience: D

Time: 1:00-4:00 p.m.

Fee: \$385

Course #S07

CE Hours: 3 technical and/or scientific

AGD Subject Code: 690

LEARNING OBJECTIVES

- Become familiar with handling properties of allograft-xenograft combinations in ridge augmentation
- Gain knowledge of experiences with alveolar socket preservation in implant site development
- Develop practical skills for lateral and vertical bone regeneration
- Gain experience with customized titanium mesh in managing complex ridge defects
- Learn how to apply soft tissue augmentation techniques to enhance long-term regenerative outcomes
- Gain knowledge in bone and soft tissue workflows for predictable, esthetic ridge reconstruction

Patricia Simon, DDS

ORTHODONTIC SET-UP FOR SURGICAL CASES

Audience: D

Time: 8:00-9:30 a.m.

Fee: \$30

Course #S09

CE Hours: 1.5 technical and/or scientific

AGD Subject Code: 310/370

LEARNING OBJECTIVES

- Understand the importance of evaluating diagnostic records in treatment planning
- Understand when extractions are indicated
- Become familiar with the goals of the pre-surgical set-up
- Learn about the importance of clear communication between the orthodontist and oral surgeon

Diana-Beatrix Velicu, DDS, MS

**CUT TO THE CHASE:
SPOTTING AND SETTING UP SURGICAL CASES**

Audience: D,H

Time: 2:30-4:00 p.m.

Fee: \$30

Course #S27

CE Hours: 1.5 technical and/or scientific

AGD Subject Code: 310/370

LEARNING OBJECTIVES

- Identify characteristics that indicate a patient requires orthognathic surgery
- Learn to differentiate between camouflage treatment and true surgical cases
- Understand pre-surgical orthodontic preparation and workflow
- Learn to compare approaches using braces versus clear aligners in surgical cases
- Learn how to apply strategies for interdisciplinary communication and surgical coordination

Patrick Wong, DDS, MD

A SIMPLIFIED APPROACH TO ORTHOGNATHIC TREATMENT PLANNING AND CARING FOR THE CLEFT PATIENT

Audience: D

Time: 12:30-2:00 p.m.

Fee: \$30

Course #S23

CE Hours: 1.5 technical and/or scientific

AGD Subject Code: 310/370

LEARNING OBJECTIVES

- Understand how to determine the ideal position of maxillary central incisor in orthognathic cases
- Learn to maximize facial esthetics for your patients particularly those of various ethnic backgrounds
- Understand effects of rotational movements of the maxillomandibular complex during orthognathic surgery
- Understand the usual surgical timeline for cleft patients
- Explore typical presentations and conditions clinicians can expect with cleft patients



FOR THE NEW DENTIST

Nathaniel Lawson, DMD, PhD

MATERIALS AND TECHNIQUES TO IMPROVE YOUR CONSERVATIVE, ADHESIVE DENTISTRY

Friday 8:00-11:00 a.m. Course #F13

Tara Aghaloo, DDS, MD, PhD

STATE OF THE ART AND SCIENCE IN DENTAL IMPLANTS WITH FOCUS ON PREVENTION, DIAGNOSIS AND TREATMENT OF COMPLICATIONS

Friday 8:30-11:30 a.m. Course #F17

Joshua Austin, DDS

THE MENTAL DENTAL CONNECTION: THE SECRET TO BEING A BETTER CLINICIAN AND LEADER

Friday 9:00 a.m.-12:00 p.m. Course #F22

Andrew Read-Fuller, DDS, MD

AVOIDING DISASTERS: EMERGENCY MANAGEMENT IN THE DENTAL OFFICE

Friday 1:00-4:00 p.m. Course #F30

William "Bo" Bruce, DMD

TREATMENT PLANNING "SIMPLIFIED": THREE EASY STEPS TO SUCCESS

Saturday 8:00-11:00 a.m. Course #S11

Waldemar Polido, DDDS, MS, PhD

EXTRACTION, IMPLANT AND GRAFT, WHEN TO DO WHAT?

Saturday 8:30-11:30 a.m. Course #S20

Timothy Donley, DDS, MSD

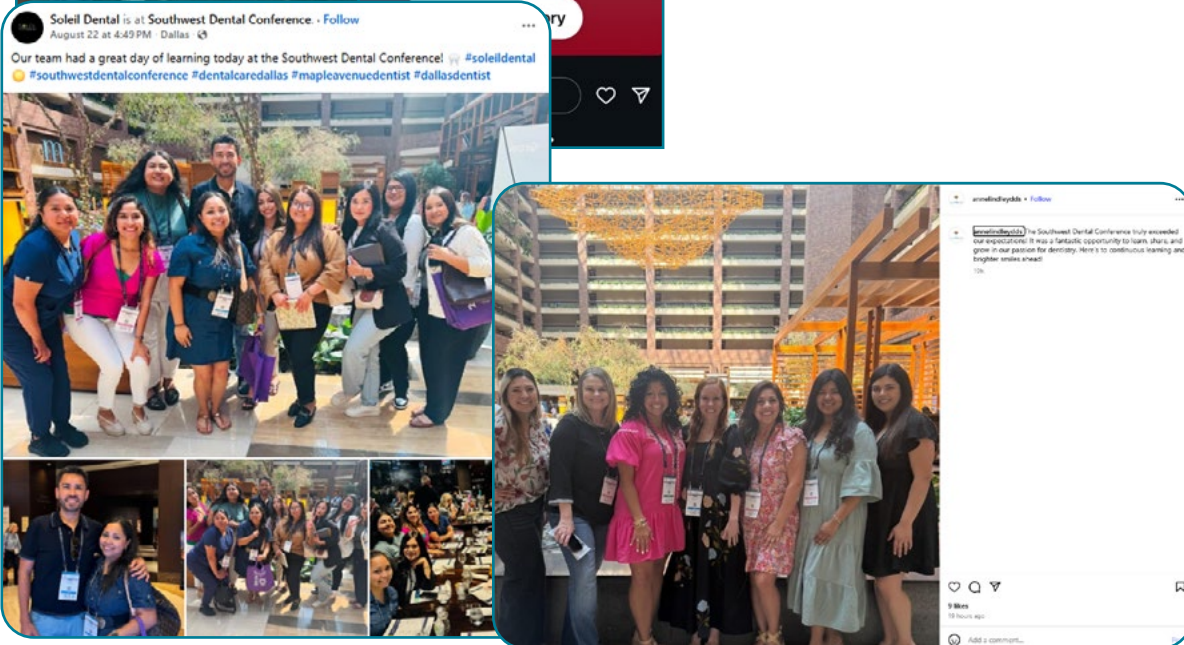
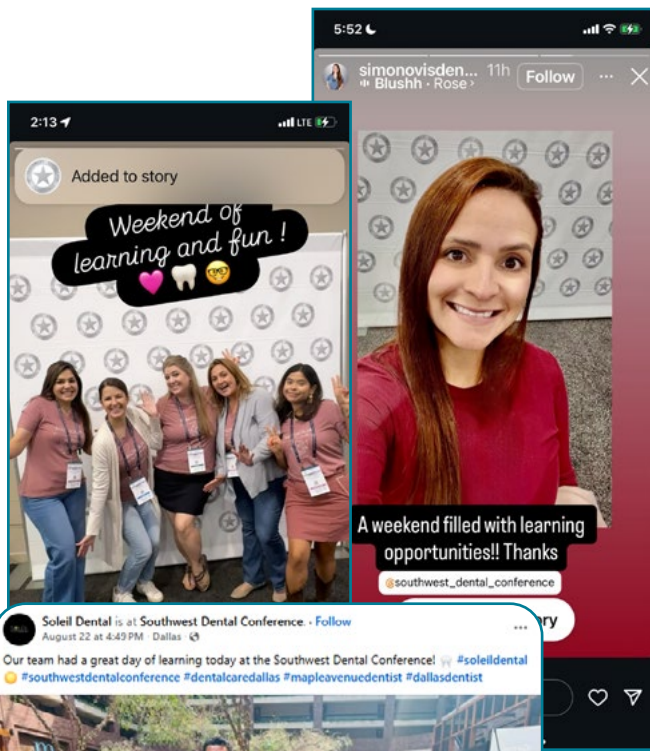
REDUCING PERIODONTAL INFLAMMATION THROUGH NUTRITION: MACRO-NUTRITIONAL RECOMMENDATIONS THAT CAN MAKE A DIFFERENCE

Saturday 1:00-4:00 p.m. Course #S24

Jonathan, Ng, DDS, MSc

MASTERING DIGITAL IMPRESSIONS – A SIMPLE GUIDE TO SCANNING TEETH AND IMPLANTS WORKSHOP

Saturday 1:00-4:00 p.m. Course #S06



FOR THE WHOLE TEAM

Gary Dougan, DDS, MPH

SECRETS OF SMOOTHER CLAIMS PROCESSING: TOP TEN REASONS CLAIMS ARE DENIED

Friday 1:30-4:30 p.m. Course F#33

Meridan Zerner, MS, RDN, CSSD, LD, CHWC

THE THOUGHTFUL 30: 30 DAY WELLNESS RESET

Friday 1:00-4:00 p.m. Course F#31

Karen Gregory RN, CDIPC

FROM EXPOSURE REPORTS TO EYEWASH STATIONS: ENSURING OSHA COMPLIANCE IN YOUR PRACTICE

Friday 9:00 a.m.-12:00 p.m. Course F#23

Edwin "Mac" McDonald, DDS

THE ART AND SCIENCE OF PROVISIONAL RESTORATIONS

Friday 8:30-11:30 a.m. Course F#20

Bruce Christopher, MA, LP, CSP

WHY ARE WOMEN SO STRANGE AND MEN SO WEIRD?

Friday 1:00-4:00 p.m. Course F#25

Jaime Almandoz, Md, MBA, TTOS

TRANSFORMING OBESITY CARE: FROM WEIGHT LOSS TO HEALTH GAINS

Friday 8:00 a.m.-11:00 p.m. Course S#10

William "Bo" Bruce, DMD

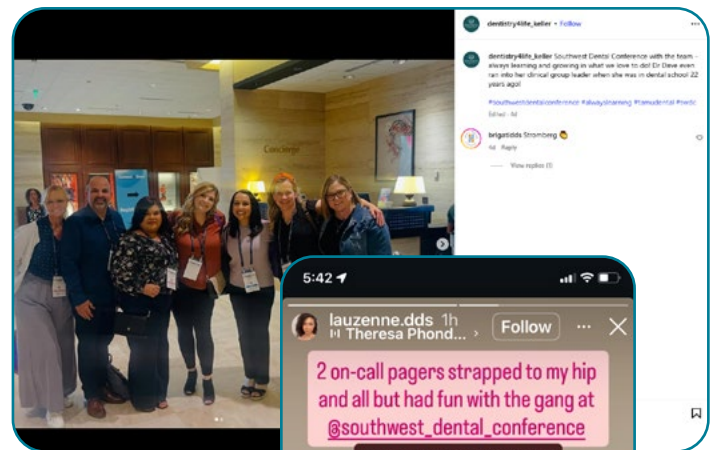
TREATMENT PLANNING "SIMPLIFIED": THREE EASY STEPS TO SUCCESS

Saturday 8:00-11:00 a.m.
Course #S11

Waldemar Polido, DDS, MS, PhD

PHOTOGRAPHY TIPS FOR THE CLINICIAN WORKSHOP

Saturday 1:30-4:30 p.m.
Course #S08



SOUTHWEST DENTAL CONFERENCE SPONSORS

A SPECIAL THANK YOU TO THE FOLLOWING COMPANIES
FOR THEIR GENEROUS CONTRIBUTIONS IN SUPPORT OF THE
2026 SOUTHWEST DENTAL CONFERENCE.

BOOTH 401



BOOTH 313



BOOTH 206



BOOTH 106



BOOTH 410



BOOTH 205



BOOTH 212



Dallas Dental Hygienists' Association

UTSW

BRIDGING MEDICINE + DENTISTRY

UT Southwestern Physicians at the 2026 Southwest Dental Conference

The Southwest Dental Conference is proud to welcome medical physicians from UT Southwestern Medical Center to the 2026 program. These interdisciplinary sessions reflect our theme, “Bridging Gaps, Breaking Boundaries: Collaboration in Oral Health,” and highlight the growing importance of collaboration between medicine and dentistry.

As patient needs become more complex, dentists play an increasingly critical role in identifying systemic disease, managing medically complex patients, and working alongside

medical colleagues. These UTSW-led sessions provide valuable insight into conditions, therapies, and innovations that directly impact dental practice and patient outcomes.

Featured UTSW Friday Courses:

Survivorship, Screening, and HPV: Improving Outcomes for the Head and Neck Cancer Community

Andrew Day, MD, MPH
Friday, 12:30–2:00 p.m.

Oral Manifestations of Cutaneous Disease

Stephanie Savory, MD
Friday, 2:30–4:00 p.m.

Featured UTSW Saturday Courses:

Transforming Obesity Care: From Weight Loss to Health Gains

Jaime Almandoz, MD, MBA, FTOS
Saturday, 8:00–11:00 a.m.

Chimeric Antigen Receptor (CAR) T-Cell Therapy: History, Present, and Future Directions

Larry Anderson, MD, PhD
Saturday, 12:00–1:30 p.m.

Precision Oncology

Isaac Chan, MD, PhD
Saturday, 2:00–3:30 p.m.



BY THE NUMBERS

SINCE 2017...



19,212

PEOPLE SERVED BY FOUNDATION ACTIVITIES



1,590

DENTIST/HYGIENIST VOLUNTEER HOURS DONATED

THANKS FOR MAKING IT ALL POSSIBLE!



During 2025, DCDSF volunteers provided oral health kits, education and/or screenings at 35 events in Dallas County, assisting a record 6030 individuals. DCDSF also sent volunteers to help at 6 events outside Dallas County.

Thank you to all who played a part by volunteering or donating to the DCDS Foundation!

VOLUNTEER AND/OR GIVE AT

WWW.DCDSFOUNDATION.ORG



VISIT DALLAS®

BIG THINGS HAPPEN HERE

In Dallas, you can expect big things. Dallas offers the best shopping in the Southwest, a cutting-edge culinary scene, 14 exciting entertainment districts, the nation's largest urban arts district and impressive accommodations. The metroplex is the #1 visitor destination in Texas!

Photo credits: Dallas CVB; Ricky Barnard from Oklahoma City, OK, United States - Ou vs. Texas Red River Shootout 2002, CC BY 2.0, Joseph Haubert (McKinney Avenue Trolley).

Klyde Warren Park

The newly opened 5.2 acre deck park is an urban green space built over Woodall Rodgers Freeway to connect Uptown, Downtown and the Arts District. www.klydewarrenpark.org



The Dallas Arboretum & Botanical Gardens

The Dallas Arboretum and Botanical Gardens was created to preserve history and nature. www.dallasarboretum.org

Bishop Arts District

Once one of Dallas' best hidden treats, this two-block former warehouse area sit in the Oak Cliff neighborhood of South Dallas. It's home to more than 60 boutiques, restaurants, bars, coffee shops and galleries, making it one of Dallas' most unique districts. www.bishopartsdistrict.com



Dallas World Aquarium

View exotic birds, lounging sloths, a wide array of animals in the many conservation projects and a vast aquarium portion. www.dwazoo.com

Trinity Groves

The 15-acre restaurant, retail, artist and entertainment destination sits at the base of the Margaret Hunt Hill Bridge in West Dallas. This ultimate foodie destination has everything from BBQ to sushi to Italian to southern comfort food and is home to the Restaurant Concept Incubator program, which encourages culinary entrepreneurs to develop restaurant concepts. www.trinitygroves.com



GeO-Deck at Reunion Tower

At 470 feet up you'll experience breathtaking 360-degree panoramic views, high-definition zoom cameras, interactive touch screens, telescopes, a free digital photo and an indoor/outdoor observation deck that lets you see for miles in any direction. iontower.com



Deep Ellum

Deep Ellum introduced jazz and blues to Dallas in the 1920s. Today, the neighborhood's rich musical history still beats on with live music venues alongside trendy dining spots and bars, unique shops and striking art installations and murals. www.DeepEllumTexas.com

WWW.VISITDALLAS.COM



Perot Museum of Nature and Science

Opened in 2012, this museum is a popular hands-on learning experience with interactive components on all four floors. With 11 permanent exhibit halls in the heart of Dallas, the Perot Museum of Nature and Science provides an unforgettable experience for guests of all ages.

www.perotmuseum.org

Sixth Floor Museum

The Sixth Floor Museum at Dealey Plaza (former Texas School Book Depository) presents the social and political landscape of the early 1960s, chronicles President Kennedy's assassination and its aftermath.

VISITDALLAS
BIG THINGS HAPPEN HERE

Dallas Zoo

Named one of "10 Amazing Zoos in the World," the Dallas Zoo is the largest zoological experience in Texas. www.dallaszoo.com



The Katy Trail

The Katy Trail runs through the densest part of our city, offering runners, bikers, hikers and others a great place to enjoy the outdoors. The Katy Trail runs from the West End/American Airlines Center in the south, through the heart of urban Dallas up to SMU and Mockingbird DART Station in the north. katytraildallas.org



Use D-Link and the Trolley to spend time in Dallas without spending a dime!

Use D-Link to explore Dallas' arts, fun, culture and dining. Check out the Dallas Arts District and much more across downtown Dallas. Buses run every 15 minutes (10:30 a.m. - 9:30 p.m.) seven days a week. Service provided by DART, Downtown Dallas, Inc. and the City of Dallas. Hop on the McKinney Avenue Trolley that takes you through Downtown, The Dallas Arts District and Uptown. Look for the "M-Line" maroon sign that's located at all the stops along the route and track the trolley to see when its near.

WWW.VISITDALLAS.COM



SWDC REGIONAL AFFILIATES



SOUTHWEST DENTAL CONFERENCE

SPONSORED BY DALLAS COUNTY DENTAL SOCIETY
13633 OMEGA ROAD, DALLAS, TEXAS 75244

swdentalconf.org

972-386-5741

Follow the SWDC on Social Media!

